

Introduction

Thank you for purchasing SoftBank 9415C.

- Read this guide thoroughly before using handset to ensure proper usage.
- Accessible services may be limited by contract conditions or service area.
- Handset is compatible with both 3G and GSM network technologies.

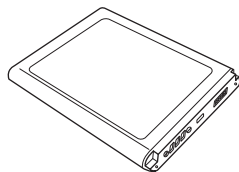
Notes

- Unauthorized copying of any part of this guide is prohibited.
- Contents are subject to change without prior notice.
- Steps have been taken to ensure the accuracy of descriptions in this guide. If you find inaccurate or missing information, contact SoftBank Mobile Customer Center, General Information (☎P.15-31).

Accessories

Make sure the following accessories are included in the package with handset. These accessories are also sold separately.
For details on accessories or optional items, contact SoftBank Mobile Customer Center, General Information (☎P.15-31).

Battery [SCBAW1]



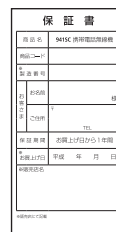
Quick Start Guide (Japanese)



Safety Precautions (Japanese)



Warranty (Handset)



Protective Film



- Use only specified Charger (sold separately) for charging.
- Handset takes microSD™/microSDHC™ Memory Card (not included). Purchase one to use Memory Card functions.
- microSD™/microSDHC™ Memory Card is referred to as "Memory Card" in this guide.
- Download Samsung New PC Studio from SAMSUNG Website (<http://jp.samsungmobile.com/pc/lineup/941/download.html>).

Chapter Contents At a Glance

| | |
|----------------------------|-----------|
| Getting Started | 1 |
| Basic Operations | 2 |
| Calling | 3 |
| Messaging | 4 |
| Internet Services | 5 |
| Digital TV | 6 |
| Camera & Imaging | 7 |
| Media Player | 8 |
| Entertainment | 9 |
| Handy Extras | 10 |
| Handset Security | 11 |
| Data Folder & Memory Card | 12 |
| Connectivity & File Backup | 13 |
| Handset Customization | 14 |
| Appendix | 15 |

About This Guide

In this guide, SoftBank 9415C is referred to as "handset." Instructions are described using mainly default settings. When settings are changed, screenshots or handset responses may differ from those depicted in this guide.

Screenshots & Handset Illustrations

Screenshots appearing in this guide are for reference only and may differ from actual Display images. Handset illustrations may differ from actual appearance. In some screenshots, Wallpaper is set to None for Display image clarity.

Confirmations & Warning Messages

Messages not described in this guide may appear; read all handset confirmations and warning messages carefully.

Japanese Functions & Services

When " (Japanese) " appears in a title, Japanese ability is required to use full range of the function or service.

Handset Use Overseas

In this guide and on handset, "overseas" or "abroad" means "outside Japan" with regard to handset/service usage.

Symbols

In this guide, graphics represent handset keys; see "Parts & Functions" (☎P.1-2). Alternatively, use Touch Panel to access functions. Touch Panel operations are indicated as follows:

Toolbar

Operation options appear at the bottom of Display.



Toolbar

Tap Menu items to select them.

Toolbar Operations

Tap Phone

Assigned Function

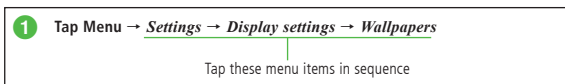
Touch Panel Operations

Touch Panel supports taps or swipes. See "Touch Panel" (☎P.1-5).

Menu Operations

Menu operation explanations are abbreviated with arrows.

Menu



For details, see "Using Main Menu" (☞ P.2-3).

Highlighting

In this guide, "highlight" means to move cursor to an item.

| | |
|--|-----|
| Introduction | 2 |
| Accessories | 3 |
| About This Guide | ii |
| Contents | iv |
| Safety Precautions | vii |
| General Notes | xiv |
| SAR Certification | xix |
| FCC RF Exposure Information | xx |
| European RF Exposure Information | xx |

1 Getting Started

| | |
|------------------------------------|------|
| Parts & Functions | 1-2 |
| Touch Panel | 1-5 |
| USIM Card | 1-7 |
| Battery & Charger | 1-9 |
| Power On/Off | 1-11 |
| My Details | 1-12 |
| Handling Precautions | |
| (Touch Panel & Key Lock) | 1-13 |
| Standby Display | 1-13 |
| Minding Mobile Manners | 1-13 |
| Security Codes | 1-14 |
| Advanced Settings | 1-15 |

2 Basic Operations

| | |
|--|------|
| Accessing Functions | 2-2 |
| Incoming Settings | 2-5 |
| Standby Display Options | 2-6 |
| Widgets (Japanese) | 2-7 |
| Text Entry | 2-8 |
| User's Dictionary (Japanese) | 2-14 |
| Phone Book | 2-15 |
| Advanced Settings | 2-18 |

3 Calling

| | |
|-----------------------------------|------|
| Voice Call | 3-2 |
| Video Call | 3-4 |
| Favorites | 3-5 |
| Emergency Numbers | 3-6 |
| Answering Machine | 3-6 |
| Black List | 3-7 |
| Call Log Records | 3-8 |
| Checking Call Time/Cost | 3-10 |
| International Calling | 3-10 |
| Global Roaming | 3-10 |
| Optional Services | 3-12 |
| Advanced Settings | 3-18 |

4 Messaging

| | |
|-------------------------------------|------|
| Messaging Basics | 4-2 |
| Customizing Mail Address | 4-3 |
| Creating/Sending Messages | 4-3 |
| Incoming Messages | 4-7 |
| Using Messages | 4-11 |
| Managing Messages | 4-14 |
| Advanced Settings | 4-16 |

5 Internet Services

| | |
|-----------------------------------|------|
| Internet Services | 5-2 |
| Yahoo! Keitai | 5-3 |
| PC Site Browser | 5-4 |
| Page Operations | 5-5 |
| Bookmarks & Saved Pages | 5-8 |
| RSS Feed | 5-9 |
| Communities | 5-10 |
| Advanced Settings | 5-11 |

6 Digital TV

| | |
|--|------|
| Enjoy One Seg in Widescreen | 6-2 |
| Digital TV Precautions | 6-3 |
| Channel Setup (Area Setup) | 6-4 |
| Watching TV | 6-4 |
| Receiving Call While Watching TV | 6-7 |
| Record/Playback Programs | 6-7 |
| TV Timer/TV Timer Recording | 6-9 |
| Advanced Settings | 6-11 |

7 Camera & Imaging

| | |
|--|------|
| Capturing Image, Recording Video & Editing | 7-2 |
| Camera | 7-3 |
| Video | 7-9 |
| Editing Still Images | 7-12 |
| Oekaki | 7-13 |
| Photo Library | 7-15 |
| Printing Still Images | 7-17 |
| Advanced Settings | 7-18 |

8 Media Player

| | |
|-----------------------------------|-----|
| Using Media Player | 8-2 |
| Downloading Media Files | 8-3 |
| Playing Music | 8-4 |
| Playing Movie | 8-6 |
| Using Playlist | 8-7 |
| Video Distribution Site | 8-8 |
| Streaming | 8-8 |
| Advanced Settings | 8-9 |

9 Entertainment

| | |
|---|------|
| Entertainment Functions | 9-2 |
| S! Applications (Japanese) | 9-3 |
| Games | 9-4 |
| S! Quick News (Japanese) | 9-5 |
| Free Content (Japanese) | 9-6 |
| S! Contents Store (Japanese) | 9-6 |
| S! Information Channel | 9-6 |
| S! Friend's Status | 9-7 |
| Digital Media Viewer (Japanese) | 9-10 |
| BookSurfing® (Japanese) | 9-11 |
| Biorhythm | 9-11 |
| Widgets (Japanese) | 9-12 |
| Advanced Settings | 9-19 |

10 Handy Extras

| | |
|---------------------------------------|-------|
| Useful Handset Applications | 10-2 |
| Alarms | 10-3 |
| Calendar | 10-4 |
| Tasks | 10-5 |
| Osaifu-Keitai® | 10-6 |
| Expense Manager | 10-8 |
| S! GPS Navi | 10-8 |
| Stopwatch | 10-9 |
| Countdown Timer | 10-9 |
| World Clock | 10-10 |
| Good Night Timer | 10-10 |
| Calculator | 10-11 |
| Notepad | 10-11 |
| Barcode/Scan | 10-11 |
| Converter | 10-14 |
| Voice Recorder | 10-14 |
| File Viewer | 10-15 |
| Dummy Call | 10-16 |
| Dictionary | 10-17 |
| Advanced Settings | 10-17 |

11 Handset Security

| | |
|----------------------------------|------|
| Handset Security | 11-2 |
| Changing Phone Password | 11-3 |
| Phone Lock | 11-3 |
| Function Lock | 11-7 |
| Restoring Default Settings | 11-7 |
| Advanced Settings | 11-8 |

12 Data Folder & Memory Card

| | |
|------------------------------|-------|
| Data Folder | 12-2 |
| Viewing Files | 12-4 |
| Managing Files/Folders | 12-6 |
| Memory Card | 12-8 |
| Viewing Memory Status | 12-10 |
| Advanced Settings | 12-11 |

13 Connectivity & File Backup

| | |
|------------------------------------|-------|
| File Transfers & Backup | 13-2 |
| Wi-Fi | 13-3 |
| Infrared | 13-5 |
| Bluetooth® | 13-6 |
| IC Transmission | 13-9 |
| USB Connection | 13-10 |
| Memory Card Backup | 13-11 |
| S! Addressbook Back-up (SAB) | 13-13 |
| Advanced Settings | 13-15 |

14 Handset Customization

| | |
|--|-------|
| Phone Settings | 14-2 |
| Sounds & Vibration & External Light Settings | 14-3 |
| Display & Font Settings | 14-4 |
| Manner Mode Settings | 14-5 |
| Call Settings | 14-5 |
| Phone Book Settings | 14-8 |
| Messaging Settings | 14-8 |
| Internet Settings | 14-12 |
| Digital TV Settings | 14-15 |
| Camera Settings | 14-18 |
| Media Player Settings | 14-20 |
| Entertainment Settings | 14-21 |
| Security Settings | 14-22 |
| Memory Settings | 14-23 |
| Connectivity Settings | 14-23 |

15 Appendix




| | |
|---|-------|
| Troubleshooting | 15-2 |
| Software Update | 15-5 |
| Function List | 15-5 |
| Text Entry Window Key Assignments | 15-10 |
| Symbols | 15-11 |
| Pictograms | 15-13 |
| Memory | 15-14 |
| Specifications | 15-14 |
| Warranty & Service | 15-19 |
| Index | 15-20 |
| Objective Index | 15-27 |
| Advanced Settings Index | 15-30 |
| Customer Service | 15-31 |

Safety Precautions

Read safety precautions before using handset.

- Observe precautions to avoid injury to self or others, or damage to property.
- SoftBank Mobile is not liable for any damages resulting from use of this product.

These labels indicate the degree of risk from improper use. Make sure you thoroughly understand their meanings before reading on.

| | |
|--|--|
|  Danger | Great risk of death or serious injury ¹ from improper use |
|  Warning | Risk of death or serious injury ¹ from improper use |
|  Caution | Risk of injury ² or damage to property ³ from improper use |

¹Includes blindness, wounds, low/high heat burns, electric shock, bone fractures, poisoning or other physical harm with aftereffects, or requiring hospitalization or ongoing hospital visits.

²Includes wounds, burns, electric shock or other physical harm not requiring hospitalization or ongoing hospital visits.

³Includes damage to home, furniture, livestock, pets, etc.

These symbols indicate prohibited or compulsory actions. Make sure you thoroughly understand their meanings before reading on.

| | |
|---|--------------------------------|
|  Prohibited actions | Prohibited |
|  Do Not Disassemble | Disassembly prohibited |
|  Avoid Liquids Or Moisture | Exposure to liquids prohibited |
|  Do Not Use Wet Hands | Use with wet hands prohibited |
|  Compulsory | Compulsory actions |
|  Disconnect Power Source | Unplug Charger from outlet |

Handset, Battery, USIM Card, Charger (Sold Separately) & Memory Card (Sold Separately)

Danger

Use specified battery and Charger (sold separately) only.

Non-specified equipment use may cause battery to leak, overheat, burst or ignite, and may cause Charger to overheat, ignite, malfunction, etc.



Compulsory

Do not disassemble, modify or solder handset or related hardware.

May cause fire, injury, electric shock or malfunction.

Battery may leak, overheat, burst or ignite.

Modifying handsets is prohibited by the Radio Law and subject to a penalty.



Do Not
Disassemble

Do not expose handset or related hardware to liquids.

Do not leave handset or related hardware wet after exposure to water, pet urine, etc., and do not charge wet battery. May cause overheating, electric shock, fire, injury or malfunction. Use them in an appropriate place properly.



Avoid Liquids
Or Moisture

Do not charge battery in or expose handset or related hardware to extreme heat (e.g., near fire or sources of heat, in direct sunlight, inside vehicles, etc.).

May cause warping/malfunction; battery may leak, overheat, ignite or burst. Handset or related hardware may become hot to the touch, leading to burn injuries, etc.



Prohibited

Do not force battery/Charger into handset. Check the direction and retry.

Battery may leak, overheat, burst, ignite, etc.



Prohibited

Warning

Do not place handset, battery or Charger in/on ovens, microwave ovens, pressure cookers, induction stoves or other cooking appliances.

Battery may leak, overheat, burst or ignite. Handset/Charger may overheat, emit smoke, ignite, malfunction, etc.



Prohibited

Keep handset off and Charger disconnected near gas stations or places with fire/explosion risk.

Handset use near petrochemicals or other flammables may cause fire/explosion.

Power off Osaifu-Keitai handset for gas station use. (If IC card lock is enabled, release lock first then power off.)



Compulsory

Do not apply strong shocks or impacts.

Do not drop/throw handset or related hardware. Battery may leak, overheat, burst or ignite, resulting in fire, electric shock, malfunction, etc.



Prohibited

If there is unusual sound/odor, smoke or any other abnormality:

Continued use may cause fire, electric shock, etc.; grasp plug to disconnect Charger from connector.



Compulsory

Keep liquids (water, pet urine, etc.) or conductive material (pencil lead, metallic strip, metal jewelry, etc.) away from Charging terminals, External Device or Memory Card Holder.



Prohibited

May cause short circuit, resulting in fire, malfunction, etc.



Caution

Do not place handset or related hardware on unstable surfaces.

Handset or related hardware may fall, resulting in injury, malfunction, etc.; be especially careful when Vibration is set or during Charge.



Prohibited

Keep handset and related hardware out of infants' reach.

Infants may choke from swallowing handset or related hardware or be injured, etc.



Compulsory

If your child is using handset and related hardware, explain all instructions and supervise usage.

Misuse may cause injury, etc.



Compulsory

Battery



Danger

Read battery label to confirm battery type; use/dispose of battery accordingly.

| Display | Battery type |
|----------|--------------|
| Li-ion00 | Lithium-ion |

Do not dispose of battery in fire.

Battery may leak, burst, ignite, etc.



Prohibited

Do not damage or subject battery to strong impacts or shocks (from nails, hammers, feet, etc.).

Battery may leak, overheat, burst, ignite, etc.



Prohibited

Keep wire or other metal objects away from battery terminals. Do not carry/store battery with conductive material (pencil lead, metallic strip, metal jewelry, etc.).

Battery may leak, overheat, burst, ignite, etc.



Prohibited

If battery fluid gets in eyes, do not rub; rinse with water and consult a doctor immediately.

Eyes may be severely damaged.



Compulsory

Warning

If battery fluid contacts skin or clothes, discontinue handset use and rinse with clean water immediately.

May cause skin damage.



Compulsory

If battery does not charge properly, stop trying.

Battery may leak, overheat, burst, ignite, etc.



Compulsory

If there is abnormal odor, excessive heat, discoloration or distortion, remove battery, being careful not to burn or injure yourself. Avoid fire sources.

Continued use may cause battery to leak, overheat, burst, ignite, etc.



Compulsory

Caution

Do not dispose of an exhausted battery with ordinary refuse.

Tape over battery terminals before disposal. Take battery to a SoftBank Shop, or follow the local disposal regulations.



Prohibited

Handset

Warning

Do not use handset while driving or cycling.

Accidents may result.

Phone use while driving or cycling is prohibited by law and subject to a penalty; park in a legal parking space beforehand.



Prohibited

Power off near electronic devices employing high precision control systems or weak signals.

May cause electronic malfunctions, etc. Be especially careful near the following devices:

Hearing aids, implanted pacemakers/defibrillators and other electronic medical equipment; fire alarms, automatic doors and other automatic control devices.



Compulsory

Because handset radio waves may impair aircraft operations, please power off handset while aboard.

When handset use aboard aircraft is allowed, please follow instructions of airline personnel.



Compulsory

Users with a heart condition should adjust ringtone Vibration and Volume as needed.

May cause heart damage.



Compulsory

If thunder is heard while outdoors, turn power off; find cover.

There is a risk of lightning strike or electric shock.



Compulsory

Do not look into Infrared Port during Infrared transmissions.

Eyesight may be affected.



Prohibited

Do not use Mobile Light near people's faces.

May cause injury such as loss of eyesight.

Avoid getting too close to infants when taking photos.

Eyesight may be temporarily affected leading to accidents.



Prohibited



Caution

Do not use handset when it may affect a vehicle's electronic equipment.

Handset use inside vehicles may cause electronic equipment to malfunction, resulting in accidents.



Prohibited

If you experience any skin irritation associated with handset use, discontinue handset use and consult a doctor.

Metal and other materials may cause skin irritation, rashes, or itchiness depending on your physical condition. For materials, see "Materials & Fittings" (P.15-15).



Compulsory

Keep handset away from magnetic cards, etc.

Data on bank cards, credit cards, telephone cards, floppy disks, etc. may be lost.



Prohibited

Do not swing handset by strap.

May harm self or others; strap may break, resulting in injury or handset malfunction/breakage.



Prohibited

Handset may become hot while in use, especially at high temperature.

Prolonged contact with skin may cause burn injuries.



Compulsory

Always maintain some distance from Speaker while ringtones, music or other handset sounds play.

Excessive volume may damage ears or hearing.



Prohibited

When view Digital TV, be sure to view in place with enough light and view from distance, otherwise it may cause decrease in vision.



Compulsory

Moderate handset volume when using Earphone Microphone.

Excessive volume may damage ears or hearing.



Compulsory

Do not touch a cracked Display.

It may cause injury.



Prohibited

Do not touch Display with excessive force.

Handset responds to a light touch. Pressing Display with excessive force may cause Display damage.



Prohibited

Charger (Sold Separately)

Warning

Do not cover/wrap Charger while charging.

Charger may overheat, resulting in fire, malfunction, etc.



Prohibited

Use only the specified voltage.

Non-specified voltages may cause fire, malfunction, etc.

- AC Charger (sold separately): AC 100V-240V (wall sockets only)



Prohibited

Leave Charger unplugged during periods of disuse; grasp plug to disconnect it.

May cause electric shock, fire or malfunction.



Disconnect
Power Source

If liquids (water, pet urine, etc.) seep inside Charger, grasp plug from outlet and disconnect Charger immediately.

May cause electric shock, smoke/fire.



Disconnect
Power Source

If plug is dusty, grasp it and disconnect Charger, then clean with a dry cloth.

Fire may result.



Compulsory

Plug Charger firmly into the outlet, keeping the plug and Charger charging terminals away from conductive material (pencil lead, metallic strip, metal jewelry, etc.).



Compulsory

May cause electric shock, short circuit, fire, etc.

Do not touch Charger plug with wet hands.

May cause electric shock or malfunction, etc.



Do Not Use
Wet Hands

Do not touch Charger if thunder is heard.

May cause electric shock, etc.



Prohibited

Caution

Grasp plug and disconnect Charger from outlet before cleaning.

May cause electric shock, etc.



Disconnect
Power Source

Always grasp plug (not cord) to disconnect Charger from outlet.

Pulling the plug by cord may damage cord, causing electric shock, fire, etc.



Compulsory

Do not subject Charger (sold separately) to strong shocks or impacts while it is plugged into the outlet.

May cause malfunction or injury.



Prohibited

Handset Use & Electronic Medical Equipment

This section is based on "Guidelines on the Use of Radio Communications Equipment such as Cellular Telephones and Safeguards for Electronic Medical Equipment" (Electromagnetic Compatibility Conference, April 1997) and "Report of Investigation of the Effects of Radio Waves on Medical Equipment, etc." (Association of Radio Industries and Businesses, March 2001).



Warning

Persons with implanted pacemaker/defibrillator should keep handset more than 22 cm away.

Radio waves may interfere with implanted pacemakers or defibrillators.



Compulsory

If you intend to use electronic medical equipment other than implanted pacemaker/defibrillator outside medical facilities, consult the vendor on radio wave effects.

Radio waves may interfere with electronic medical equipment.



Compulsory

Observe these rules inside medical facilities to avoid effects of radio waves on electronic medical equipment:

- Do not enter an operating room or an Intensive or Coronary Care Unit while carrying a handset.
- Keep handset off in hospitals; cancel the setting that turns handset power on automatically (alarm, etc.) beforehand.
- Even in lobbies or other places where handset use is permitted, keep handset off near electronic medical equipment.
- Obey medical facility rules on mobile phone use.



Compulsory

Power off in crowds/trains. Persons with implanted pacemaker/defibrillator may be near. Cancel auto power on settings (alarm, etc.) beforehand.

Radio waves may interfere with implanted pacemakers or defibrillators causing such devices to malfunction.



Compulsory

General Notes

General Use

- SoftBank Mobile is not liable for any damage resulting from accidental loss/alteration of any data on handset/Memory Card. Please keep separate records of Phone Book entries, etc.
- Handset transmissions may be disrupted inside buildings, tunnels, or underground, or when moving into/out of such places.
- Use handset without disturbing others.
- Handsets are radios as stipulated by the Radio Law. Under the Radio Law, handsets must be submitted for inspection upon request.
- Handset use near landlines, TVs or radios may cause interference.
- **Beware of Eavesdropping**
Because this service is completely digital, the possibility of signal interception is greatly reduced. However, some transmissions may be overheard.

Eavesdropping

Deliberate/accidental interception of communications constitutes eavesdropping.

Inside Vehicles

- Never use handset while driving.
- Do not park illegally to use handset.
- Handset use may affect a vehicle's electronic equipment.

Aboard Aircraft

- Radio waves may impair aircraft operations; power off while aboard aircraft.
If handset use aboard aircraft is allowed, follow airline personnel instructions.

Function Usage Limits

- Handset replacement or service cancellation disables these functions:
 - Camera
 - Media Player
 - TV etc.
- After a long period of disuse, these functions may be unusable; establish a network connection to restore usability.

Handset Care

- **Handset is not waterproof. Avoid exposure to liquids and high humidity.**

- Keep handset away from precipitation.
 - Cold air from air conditioning, etc. may condense causing corrosion.
 - Avoid placing handset in damp places (restrooms, bath/shower rooms, etc.).
 - On the beach, keep handset away from water and direct sunlight.
 - Perspiration may get inside handset causing malfunction.
- If handset is left with no battery or an exhausted one, data may be altered/lost. SoftBank Mobile is not liable for any resulting damage.
 - Use handset between 5°C - 40°C. Avoid extreme temperatures/direct sunlight.
 - Exposing lens to direct sunlight may damage color filter affecting image color.
 - Do not drop or subject handset to shocks.
 - Clean handset with a dry, soft cloth. Using alcohol, thinner, etc. may damage it.
 - Do not expose handset to rain, snow, or high humidity.
 - Never disassemble or modify handset.
 - Avoid scratching Display.
 - When using headphones, moderate the volume to avoid sound bleed.
 - Heavy objects or excessive pressure should be avoided. This may cause malfunction or injury.
 - Do not sit down with handset in a back pocket.
 - Do not place heavy objects on handset in a bag.
 - Insert only specified devices into Headphone Port. Malfunction or damage may result.
 - Always turn power off before removing battery. If battery is removed while saving data or sending mail, data may be lost, changed or destroyed.
 - Using aftermarket protective film or other accessories on Touch Panel might interfere with Touch Panel responsiveness and functionality.

Copyrights

Copyright laws protect sounds, images, computer programs, databases, other materials for copyright holders. Duplicated material is limited to private use only. Use of materials beyond this limit or without permission of copyright holders may constitute copyright infringement, and be subject to criminal punishment. Comply with copyright laws when using images captured with handset camera. The software contained in handset is copyrighted material; copyright, moral right, and other related rights are protected by copyright laws. Do not copy, modify, alter, disassemble, decompile, or reverse-engineer the software, and do not separate it from hardware in whole or part.

Trademarks

- Licensed by QUALCOMM Incorporated under one or more of the following United States Patents and/or their counterparts in other nations:

| | | | | |
|-----------|-----------|-----------|-----------|-----------|
| 4,901,307 | 5,490,165 | 5,056,109 | 5,504,773 | 5,101,501 |
| 5,506,865 | 5,109,390 | 5,511,073 | 5,228,054 | 5,535,239 |
| 5,267,261 | 5,544,196 | 5,267,262 | 5,568,483 | 5,337,338 |
| 5,600,754 | 5,414,796 | 5,657,420 | 5,416,797 | 5,659,569 |
| 5,710,784 | 5,778,338 | | | |
- Video Call, Navi appli, S! GPS Navi, Lifestyle -Appli, Location Navi, S! Mail, PC Site Browser, S! Quick News, S! Appli, S! Friend's Status, S! Addressbook Back-up, Graphic Mail, Feeling Mail, Auto Art, S! Information Channel and Weather Indicator, Tada-Deco, Tada-Komi, Tada-Game, Tada-Utaban, Secure Remote Lock, Keitai Wi-Fi are trademarks or registered trademarks of SOFTBANK MOBILE Corp.
- "SOFTBANK", SOFTBANK's equivalent in Japanese, and the SOFTBANK logo are trademarks or registered trademarks of SOFTBANK CORP. in Japan and in other countries.
- "Yahoo!", the "Yahoo!" and "Y!" logos are trademarks or registered trademarks of Yahoo! Inc.

- This product contains ACCESS Co., Ltd.'s NetFront Internet browser software. NetFront is a trademark or registered trademark of ACCESS Co., Ltd. in Japan and in other countries.



- Part of the software in this product incorporates a module developed by the Independent JPEG Group.
- THIS PRODUCT IS LICENSED UNDER THE MPEG-4 VISUAL PATENT PORTFOLIO LICENSE FOR THE PERSONAL AND NON-COMMERCIAL USE OF A CONSUMER FOR (i) ENCODING VIDEO IN COMPLIANCE WITH THE MPEG-4 VISUAL STANDARD ("MPEG-4 VIDEO") AND/OR (ii) DECODING MPEG-4 VIDEO THAT WAS ENCODED BY A CONSUMER ENGAGED IN A PERSONAL AND NONCOMMERCIAL ACTIVITY AND/OR WAS OBTAINED FROM A VIDEO PROVIDER LICENSED BY MPEG LA TO PROVIDE MPEG-4 VIDEO. NO LICENSE IS GRANTED OR SHALL BE IMPLIED FOR ANY OTHER USE. ADDITIONAL INFORMATION INCLUDING THAT RELATING TO PROMOTIONAL, INTERNAL AND COMMERCIAL USES AND LICENSING MAY BE OBTAINED FROM MPEG LA, LLC. SEE [HTTP://WWW.MPEGLA.COM](http://WWW.MPEGLA.COM).
- Contains Macromedia® Flash® Flash Lite™ technology by Adobe Systems Incorporated.
- Copyright© 1995-2005 Adobe Systems Incorporated. All rights reserved.
- Macromedia, Flash, Macromedia Flash, and Macromedia Flash Lite are trademarks or registered trademarks of Adobe Systems Incorporated in the United States and other countries.
- JBlend™ is incorporated in this product. JBlend™ is a Java™ execution environment developed by Aplix Corporation for implementing advanced performance and fast operation on small-memory systems.
- Powered by JBlend™ Technology. JBlend and JBlend logos are registered trademarks of Aplix Corporation in Japan and other countries.
- Powered by JBlend™, ©1997-2006 Aplix Corporation. All rights reserved.
- JBlend and all JBlend-based trademarks and logos are trademarks or registered trademarks of Aplix Corporation in Japan and other countries.



- Java and all Java-based trademarks and logos are trademarks or registered trademarks of Sun Microsystems, Inc. in the United States and other countries.
 - "Chaku-Uta®" and "Chaku-Uta Full®" are registered trademarks of Sony Music Entertainment Corp.
 - microSD™/microSDHC™ is a trademark of SD Association.
- 
- Bluetooth is a trademark of the Bluetooth SIG, Inc. The Bluetooth word mark and logos are owned by the Bluetooth SIG, Inc. and any use of such marks by Samsung Electronics is under license. Other trademarks and trade names are those of their respective owners.
- 
- Wi-Fi Certified® and its logo are registered trademarks of the Wi-Fi Alliance.
- 
- QR Code is a registered trademark of DENSO WAVE INCORPORATED.
 - Powered by SwiftDecoder™ Copyright ©1996-2007, Omniplanar, Inc. All Rights Reserved.
 - Windows and Windows Media Player are either registered trademarks or trademarks of Microsoft Corporation in the United States and/or other countries.
 - BookSurfing is registered trademark of CELSYS, Inc., Voyager Japan, Inc., INFOCITY, Inc.
 - Windows is an abbreviation for the Microsoft Windows operating system.
 - FeliCa is a contactless IC card technology developed by Sony Corporation. FeliCa is a registered trademark of Sony Corporation.
 -  is a registered trademark of FeliCa Networks, Inc.
 - "OsaiFu-Keitai" is a registered trademark of NTT DoCoMo, Inc. in Japan.
 - "Machi-Uta®" is a registered trademark of KDDI CORPORATION.
 - "Twitter" is a registered trademark of Twitter, Inc. in Japan.
 - Other company and product names mentioned herein are trademarks or registered trademarks of their respective owners.

Bluetooth®

SoftBank Mobile is not liable for any damages resulting from data/information losses due to use of handset Bluetooth® function.

■ Precautions

Bluetooth® shares the same frequency band with other industrial/scientific/medical equipment (microwave ovens, etc.), radio stations, amateur radio stations, etc. (hereinafter "other radio stations").

- 1 Before using Bluetooth® function, visually check that there are no other radio stations sharing the same frequency band nearby.
- 2 Should interference occur between this handset and other radio stations, move somewhere else or stop Bluetooth® function (stop the transmission) immediately.
- 3 For additional information and support, contact SoftBank Mobile as listed below.

SoftBank Mobile Customer Center

Contact: SoftBank Mobile Customer Center
From a SoftBank handset, dial 157 (toll free) for General Information. See "Customer Service" (☎P.15-31) for service area landline numbers.

Frequency Band

- Handset Bluetooth® frequency band is as follows:
 - This wireless device utilizes the 2.4 GHz band. It uses FH-SS modulation, and induces interference from distances of 1.5 - 5 meters. Induced interference varies according to surrounding environment.



Wi-Fi (Wireless LAN)

Wireless LAN (hereafter "Wi-Fi") uses radio waves to enable communications between compatible devices, thus allowing connection to a local area network from anywhere within range. However, there is a risk of data interception unless security is established. Users are advised to assess their responsibilities and accordingly configure security settings.

- Do not use Wi-Fi near electrical appliances, audiovisual equipment or office automation equipment; may affect Wi-Fi transmission speed, availability, clarity, etc. (There is a possibility of interference especially when a microwave oven is used.)
- The target access point may not be detected correctly if there are multiple access points nearby.

■ Precautions

Wi-Fi shares the same frequency band with other industrial/scientific/medical equipment (microwave ovens, etc.), radio stations, amateur radio stations, etc. (hereinafter "other radio stations").

- 1 Before using Wi-Fi function, visually check that there are no other radio stations sharing same frequency band nearby.
- 2 Should interference occur between this handset and other radio stations, move somewhere else or stop Wi-Fi function (stop the transmission) immediately.
- 3 For additional information and support, contact SoftBank Mobile:

SoftBank Mobile Customer Center

Contact: SoftBank Mobile Customer Center
From a SoftBank handset, dial 157 (toll free) for General Information. See "Customer Service" (☎P.15-31) for service area landline numbers.

Frequency Band

- Handset Wi-Fi frequency band is as follows:
This wireless device utilizes the 2.4 GHz band. It uses FH-SS modulation, and induces interference from distances of 1.5 to 5 meters. Induced interference varies according to surrounding environment.

2.4DS4/OF4

■ Simultaneous Use with Bluetooth®

- Both Wi-Fi (IEEE 802.11b/g) and Bluetooth® use the 2.4 GHz band. Therefore, Wi-Fi transmission speed, availability and clarity may be affected when Bluetooth® device is used near handset or when handset Bluetooth® is active. Should interference occur, discontinue use of Bluetooth® device or cancel handset Bluetooth®.
- This handset supports Wi-Fi channels 1 - 13.
Handset will not connect to access points set to other channels.
 - Available channels vary by country.
 - For use of Wi-Fi aboard aircraft, check with airline beforehand.
 - Wi-Fi function is only intended for use in Japan.

Using Communities (Social Network Sites)

Note the following when using Communities via a standard (3G) connection:

- Upload up to 300KB (maximum) of video via a 3G network.
- You cannot sign in to Picasa or YouTube accounts via 3G. Connect Wi-Fi to sign in to Picasa or YouTube. Once signed in, upload files via 3G/Wi-Fi.

SAR Certification

9415C meets the technical standards of Ministry of Internal Affairs and Communications (MIC) regarding radio wave absorption by a human body.

These technical standards are established on a scientific basis to prevent radio waves emitted from wireless devices such as mobile phones that are used close to human head from affecting human health. These standards assure that the SAR (Specific Absorption Rate), an indicator of the amount of average energy absorbed in the side of a human head, must not exceed the permissive value of 2 W/kg*. This value includes a substantial safety margin designated to assure the safety of all persons, regardless of age and physical size. The value is equal to the international guideline recommended by International Commission on Non-ionizing Radiation Protection (ICNIRP) that has a cooperative relationship with the World Health Organization (WHO).

The highest SAR value for 9415C is 0.212 W/kg. This value is obtained in accordance with the MIC testing procedure with the mobile phone transmitting at its highest permitted power level. While there may be differences in the SAR levels depending on phones, they all meet the MIC's permissible value. Because mobile phones are designed to employ the minimum power level required for the communication with the base station, the SAR of the phone during a call is usually below the maximum value.

For further information about SAR, please see the following Websites:

MIC: <http://www.tele.soumu.go.jp/jele/index.htm>

ARIB: <http://www.arib-emf.org/>

*The guideline is defined by relevant laws and regulations associated with the Radio Law (No. 2 of Article 14 of Ordinance Regulating Radio Equipment).

SoftBank Mobile Body SAR Policy

- * Body SAR: The SAR value at the maximum transmission power when continuously talking with handset placed on the body and using earphone-microphone.
- ** Specific Absorption Rate (SAR) : The value measured when having talked continuously for six minutes.
- *** Placement on the body: Measurements are taken with the rear of handset facing the body at a distance of 1.5 cm as the ordinary handset position. In order to comply with radio frequency exposure requirements, use an accessory (e.g. belt clip, holster) that does not contain metallic parts to maintain a 1.5 cm separation between the body and handset.

For further information, see the following SoftBank Mobile Website:

<http://www.softbankmobile.co.jp/ja/info/public/emf/emf02.html>

FCC RF Exposure Information

Your handset is a radio transmitter and receiver.

It is designed and manufactured not to exceed the emission limits for exposure to radio frequency (RF) energy set by the Federal Communications Commission of the U.S. Government.

The guidelines are based on standards that were developed by independent scientific organizations through periodic and thorough evaluation of scientific studies. The standards include a substantial safety margin designed to assure the safety of all persons, regardless of age and health.

The exposure standard for wireless handsets employs a unit of measurement known as the Specific Absorption Rate, or SAR. The SAR limit set by the FCC is 1.6 W/kg. The tests are performed in positions and locations (e.g., at the ear and worn on the body) as required by the FCC for each model. The highest SAR value for this model handset when tested for use at the ear is 0.95 W/kg and when worn on the body, as described in this user guide, is 0.25 W/kg.

Body-worn Operation; This device was tested for typical body-worn operations with the back of the handset kept 1.5 cm from the body. To maintain compliance with FCC RF exposure requirements, use accessories that maintain a 1.5 cm separation distance between the user's body and the back of the handset. The use of belt clips, holsters and similar accessories should not contain metallic components in its assembly. The use of accessories that do not satisfy these requirements may not comply with FCC RF exposure requirements, and should be avoided.

The FCC has granted an Equipment Authorization for this model handset with all reported SAR levels evaluated as in compliance with the FCC RF emission guidelines. SAR information on this model handset is on file with the FCC and can be found under the Display Grant section of <http://www.fcc.gov/oet/fccid> after searching on FCC ID A3LSWD941SC.

Additional information on Specific Absorption Rates (SAR) can be found on the Cellular Telecommunications & Internet Association (CTIA)

Website at <http://www.phonefacts.net>.

European RF Exposure Information

Your mobile device is a radio transmitter and receiver. It is designed not to exceed the limits for exposure to radio waves recommended by international guidelines.

These guidelines were developed by the independent scientific organization ICNIRP and include safety margins designed to assure the protection of all persons, regardless of age and health.

The guidelines use a unit of measurement known as the Specific Absorption Rate, or SAR. The SAR limit for mobile devices is 2 W/kg and the highest SAR value for this device when tested at the ear was 0.957 W/kg*. As mobile devices offer a range of functions, they can be used in other positions, such as on the body as described in this user guide. In this case, the highest tested SAR value is 0.258 W/kg.

As SAR is measured utilizing the device's highest transmitting power the actual SAR of this device while operating is typically below that indicated above. This is due to automatic changes to the power level of the device to ensure it only uses the minimum level required to reach the network.

The World Health Organization has stated that present scientific information does not indicate the need for any special precautions for the use of mobile devices. They note that if you want to reduce your exposure then you can do so by limiting the length of calls or using a hands-free device to keep the mobile phone away from the head and body.

***The tests are carried out in accordance with international guidelines for testing.**