

Support

Customer Service

Call these numbers toll free from landlines.

| Subscription Areas | Contact | |
|--|---------------------|----------------|
| Hokkaido, Aomori, Akita, Iwate, Yamagata, Miyagi, Fukushima, Niigata, Tokyo, Kanagawa, Chiba, Saitama, Ibaraki, Tochigi, Gunma, Yamanashi, Nagano, Toyama, Ishikawa, Fukui | General Information | ☎ 0088-240-157 |
| | Customer Assistance | ☎ 0088-240-113 |
| Aichi, Gifu, Mie, Shizuoka | General Information | ☎ 0088-241-157 |
| | Customer Assistance | ☎ 0088-241-113 |
| Osaka, Hyogo, Kyoto, Nara, Shiga, Wakayama | General Information | ☎ 0088-242-157 |
| | Customer Assistance | ☎ 0088-242-113 |
| Hiroshima, Okayama, Yamaguchi, Tottori, Shimane, Tokushima, Kagawa, Ehime, Kochi, Fukuoka, Saga, Nagasaki, Oita, Kumamoto, Miyazaki, Kagoshima, Okinawa | General Information | ☎ 0088-250-157 |
| | Customer Assistance | ☎ 0088-250-113 |

SoftBank Customer Center
From a SoftBank handset, dial toll free at
157 (General Information)
113 (Customer Assistance)

SoftBank Global Call Center
From outside Japan, dial
+81-3-5351-3491
(International charges apply.)
Call this number immediately if handset/USIM Card is lost or stolen while outside Japan.

More Information

Handset User Support
Via Yahoo! Keitai Main Menu:
From above the search field,
select **メニュー** → **English** →
User Support.

Online English Manual
See SOFTBANK MOBILE Corp.
Website (<http://www.softbank.jp>).
May be unavailable at purchase.
Call Customer Service or try later.

Emergency Numbers

- Police **110**
- Fire & Ambulance **119**
- Maritime Safety Agency.... **118**

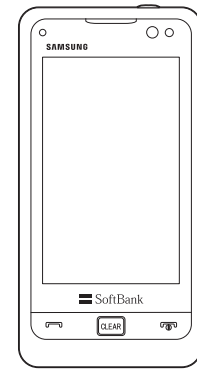
GH68-20392A (Rev. 1.0)

SoftBank 930SC First Step Guide

Emergency Numbers

Customer Service

More Information



English Interface

International Call

Customizing Address

And More...

Safety Precautions

Do not short-circuit Charger Port.

Keep metal objects away from the Charger Port. Keep handset away from jewelry. Battery may leak, overheat, burst, or ignite causing injury. Use a case to carry handset.

Avoid battery leakage, breakage or fire injury.

- Do not:**
- Heat or dispose of battery in a fire.
 - Disassemble, modify, or break battery.
 - Damage or solder on to battery.
 - Use a damaged or deformed battery.
 - Use a non-specified charger.
 - Force battery into handset.
 - Charge or place battery near fire, heat sources or expose it to extreme heat.
 - Use battery for other equipments.

Do not insert foreign objects into handset.

Do not place metal or flammable objects in handset or Charger. This may cause fire or electric shock. Keep handset out of the reach of children.

Keep handset away from liquid-filled containers.

Keep handset and Charger away from chemicals/liquids. Fire or electric shock may result.

Keep handset/Charger out of microwave ovens.

Battery or handset may leak, burst, overheat, or ignite.

Do not use Mobile Light near people's faces.

Eyesight may be temporarily affected leading to accidents. Use of controls, adjustments, or performance of procedure other than those specified herein may result in hazardous radiation exposure. As the emission Record from Mobile Light LED used in this product is harmful to the eyes, do not attempt to disassemble the cabinet. Servicing is limited to qualified servicing station only. Contact SoftBank Customer Center, Customer Assistance for repairs.

Do not subject handset to shocks.

Subjecting handset or Charger to shocks may cause malfunction or injury. Should handset break, remove battery and contact the SoftBank Customer Center, Customer Assistance. Discontinue handset use. Fire or electric shock may occur.

Keep handset off and Charger disconnected near filling station or places with risk of fire/explosion.

Handset use near petrochemicals or other flammables may lead to fire or explosion.

Preventing accidents

- For safety, never use handset while driving. Pull over beforehand. Mobile phone use while driving is prohibited by the revised Road Traffic Law (Effective November 1 2004).
- Do not use headphones while driving or riding a bicycle. Accidents may result.
- Do not turn the volume up so high that ambient sounds cannot be heard, especially when walking in or around traffic to avoid accidents.

Do not swing handset by the strap.

Injury or breakage may result.

Use only the specified voltage.

Non-specified voltages may cause fire or electric shock.

AC Charger: AC 100V-240V Input

SoftBank is not liable for problems caused by charging handset abroad.

Do not use step up/down transformers.

Use of the AC Charger with step up/down transformers may cause fire, electric shock or damage.

Do not plug multiple cords in one outlet.

Excess heat or fire may occur.

Do not bend, twist, pull, or set objects on the cords or heat or pull the cords.

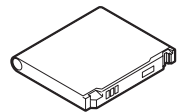
Fire or electric shock may result.

For more information, see User Guide P:xxx

Before Using Handset

Accessories

• Battery [SCBAK1]



• Stereo Earphones



• Earphone Conversion Cable with Microphone



• Stylus with Strap [SCKAP1]



★ Utility software can be downloaded from SoftBank website (<http://www.softbank.jp>).
Samsung PC Studio can be downloaded from SAMSUNG website (<http://jp.samsungmobile.com/pc/lineup/930download.html>).

Manner Mode

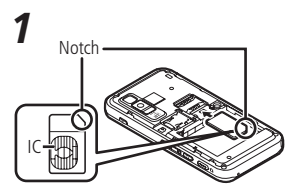
Minding Mobile Manners

Please use handset responsibly. Inappropriate handset use can be both dangerous and bothersome to others. Please take care not to disturb others with handset use. Adjust handset use to your surroundings accordingly.

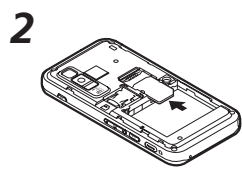
Activating/Canceling Manner Mode

- Press **[Manner Mode]** for 1+ seconds

USIM Card Installation



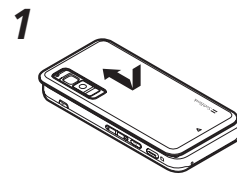
1 Insert USIM Card with IC Chip down as shown in the illustration



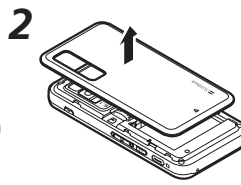
2 Push in USIM Card until it stops

USIM Card must be inserted to use 930SC. Turn 930SC off and remove battery before inserting/removing USIM Card. To prevent damaging it, avoid touching the IC chip when inserting or removing USIM Card.

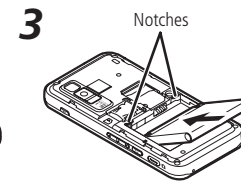
Battery Installation



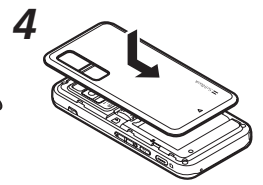
1 Press down to slide Battery Cover loose



2 Remove Battery Cover completely



3 Align Battery Slots and 930SC Notches to insert battery



4 Slide Battery Cover into 930SC Slots; replace Battery Cover

Do not touch battery contacts.

USIM PINs

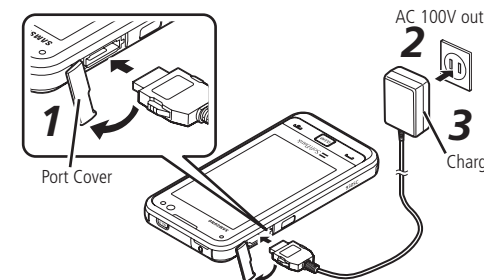
- PIN
4- to 8-digit security code; prevents unauthorized use. Set **PIN certification** to **On** to require PIN entry at power on.
- PIN2
4- to 8-digit security code required for Reset Call Cost or Edit Cost Limit, etc.

Change PIN and PIN2 as required.

- Canceling PIN Lock (PUK/PUK2 Code*)
Incorrectly entering PIN or PIN2 three consecutive times activates PIN Lock and limits 930SC function access. Enter PUK (PIN Unlocking Key) Code to cancel PIN Lock. For more information, contact Customer Service.
- ★ Entering PUK/PUK2 incorrectly ten consecutive times locks USIM Card and disables 930SC. Write down PUK and PUK2. Unlocking USIM Card requires special service. Contact Customer Service.

Change Phone Password or Network Password on 930SC.

Charging



1 Open Port Cover and insert Adapter Connector

- 2 Plug Charger into an AC 100V outlet**
- While charging, battery indicator charges as follows:
■ → ■■ → ■■■. ■■■ flashes when battery is full.
 - Charging time is approximately 180 minutes.

3 Unplug Charger, then disconnect handset

Security Codes

- Phone Password
4-digit number (9999 by default) required to use or change handset functions. Entered digits appear as *.
- Center Access Code
4-digit number specified at subscription; use to subscribe to fee-based information/access Voice Mail via landlines.

- Network Password
4-digit number specified at subscription; use for Call Barring, etc. Entering it incorrectly three consecutive times locks Call Barring settings. To resolve, Network Password and Center Access Code must be changed. For details, contact Customer Service.

Change Phone Password or Network Password on 930SC.

Specifications

SoftBank 930SC

| | |
|---------------------------------------|---|
| Weight | Approximately 127 g |
| Continuous Talk Time | Voice Call: Approximately 250 minutes (3G)/350 minutes (GSM) Video Call: Approximately 130 minutes |
| Continuous Standby Time (Display off) | Approximately 400 hours (3G)/450 hours (GSM) |

| | |
|---------------------------|---------------------------------------|
| Charging Time (power off) | AC Charger: Approximately 180 minutes |
| Dimensions (W x H x D) | Approximately 58.1 x 115.2 x 13.0mm |
| Maximum Output | 0.25W |

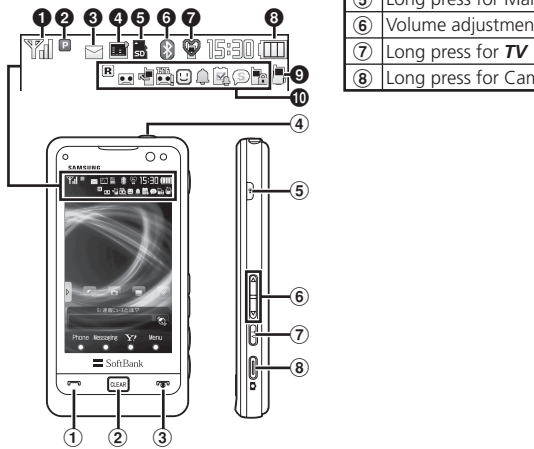
- Values calculated with battery installed.
- Actual times may be reduced by alternating between operations/transmissions and Standby.

Getting Started

Display Indicators

| | |
|----|--|
| 1 | Signal Strength |
| 2 | Network Connection Status |
| 3 | New Message Memory Full (S! Mail/SMS) |
| 4 | Music/Timer/Reservation Status |
| 5 | System Information |
| 6 | Data Transmission Status |
| 7 | Manner Mode |
| 8 | Battery Level |
| 9 | Alert Tone Volume and Vibration Status |
| | Roaming Activated |
| | Answering Machine Active |
| | Voice Mail/Call Forwarding Active |
| | Unheard Answering Machine Message |
| | Unheard Voice Mail |
| 10 | Unread S! Friend's Status Registration Request |
| | Unread S! Friend's Status Notification |
| | Alarm Set |
| | Schedule |
| | Schedule with Alarm Set |
| | Tasks |

| | |
|----|----------------------|
| 10 | Tasks with Alarm Set |
| | Secret Mode Shown |
| | Password Lock Active |



Key Assignments

| | |
|---|-------------------------------------|
| 1 | Initiate or accept Voice/Video Call |
| 2 | Return to the previous window |
| 3 | Turn power on/off or end operations |
| 4 | Lock/Unlock Touch panel and keys |
| 5 | Long press for Manner Mode |
| 6 | Volume adjustment |
| 7 | Long press for TV |
| 8 | Long press for Camera |

Function List

| |
|--------------------------------|
| Toolbar Menu |
| Phone |
| Dial |
| Phonebook |
| Call log |
| Account details |
| Messaging |
| Received msg. |
| Create new |
| Retrieve new |
| Drafts |
| Templates |
| Sent msg. |
| Unsent |
| Server mail |
| Create new SMS |
| Settings |
| Memory status |
| Y! Keitai |
| Yahoo! Keitai |
| Bookmarks |
| Saved pages |
| Enter URL |
| History |
| PC site browser |
| Yahoo! Keitai browser settings |

| |
|----------------------|
| Main Menu |
| Oekaki anime |
| Photo Album |
| Media Player |
| Music |
| Movie |
| Streaming |
| Settings |
| Communication |
| S! Loop |
| S! Friend's Status |
| Camera |
| Take photo |
| Record Video |
| Bar code reader |
| TV |
| Watch TV |
| Program guide |
| TV links |
| TV player |
| Reservation list |
| Settings |

| |
|------------------------|
| Tools |
| Alarm |
| Calculator |
| Converter |
| World clock |
| Notepad |
| Tasks |
| Voice recorder |
| Stopwatch |
| Bar code reader |
| File viewer |
| Dictionary |
| Software update |
| Data Folder |
| Pictures |
| My Pictograms |
| Ring songs · tones |
| Music |
| Videos |
| Graphic Mail templates |
| Flash® |
| Flash® Ringtones |
| Other documents |
| Memory status |

| |
|--|
| Entertainment |
| S! Quick News |
| S! Information Channel/Weather Indicator |
| Dice |
| RandomBall |
| Calendar |
| Phonebook |
| Phonebook |
| Create new entry |
| Call log |
| Group settings |
| Account details |
| Speed dial |
| S! Addressbook Back-up |
| Settings |
| Memory status |
| Settings |
| Sound settings |
| Display settings |
| Phone settings |
| Security |
| Call settings |
| Manner mode settings |
| Connectivity |
| Memory settings |

Handset Functions

Basic Operations

Handset Power On/Off

- Power On**
- until Display turns on

930SC initiates Network Info retrieval the first time any of **Messaging**, **Y!**, etc. is tapped in Standby screen. Tap **Yes** then follow onscreen instructions.

Power Off

- until Display turns off

English Interface

- メニュー → 設定 → 一般設定 → Language → English

My Phone Number

- Phone → Account details

- to exit

Setting Clock

- Menu → Settings → Phone settings → Date & Time → Set Date & Time → Time field → Enter time (12/24-hour format) → Date field → Enter year, month and day → Save

Calls

Voice Call

- Enter a phone number → Confirm the number → /Call

- to end the call

Using Call Log Records

- for 1+ seconds → Received/Dialed → Select a record → of the record → Voice call

- to end the call

Video Call

- Enter a phone number → Video call

- to end the call

International Call

International Call Service as well as Global Roaming Service require application for use. Details and applications are available online: http://mb.softbank.jp/mb/en/global_service/

- Enter a phone number → More → International call → Select country/Enter code for direct entry → Select Call from → Confirm the number →

- to end the call

To call a Softbank handset overseas, enter handset phone number; country code is not required.

Receiving a Call

- When 930SC rings/vibrates,

- to end the call

Answering Machine

Activating & Canceling

- Menu → Settings → Call settings → Answering machine → On/Off

- When **On**, appears in Standby.

Playing Messages

- Menu → Settings → Call settings → Answering machine → Play messages →

- Select a message

Deleting Messages

- Menu → Settings → Call settings → Answering machine → Play messages →

- Delete → Check message to delete →

- Delete → Yes

Text Entry

Changing Text Entry Mode

- In a text entry window, → Select entry mode

| | |
|----|-----------------------------------|
| 漢 | Kanji/Hiragana |
| 力 | Double-byte Katakana |
| 加 | Single-byte Katakana |
| A | Double-byte Alphanumerics |
| Ab | Single-byte Alphanumerics |
| 1 | Double-byte Numbers |
| 12 | Single-byte Numbers |
| * | Double-byte Symbols |
| @# | Single-byte Symbols |
| 絵 | Pictograms |
| 顔 | Emoticons |
| 韓 | Hangul |
| a | Double-byte Alphabet (Lower case) |
| ab | Single-byte Alphabet (Lower case) |

Example: Entering "NO"

- In a text entry window, → Ab →

- 6 MNO (Twice) → → 6 MNO (Thrice) → OK

Messaging

S! Mail/SMS

S! Mail

Exchange messages of 30,000 single-byte or 15,000 double-byte characters (approx.) with S! Mail compatible SoftBank handsets or other devices via E-mail; attach media or other files for multimedia messaging.

SMS

Exchange up to 70 double/single-byte characters or 160 single-byte alphanumerics with SMS compatible SoftBank handsets. Use handset phone numbers as mail addresses.

Customizing Address

Change alphanumerics before @ of handset mail address. May help reduce spam.

- Messaging → Settings → Custom mail address → English → Follow onscreen instructions

Sending Messages

S! Mail

- Messaging → Create new → Recipient field → Enter address → Enter mail address → Subject field → Enter subject → Attach field → Data Folder → Select a folder → Select a file → Enter Text field → Enter message → Send

SMS

- Messaging → Create new SMS → Recipient field → Enter number → Enter phone number → Enter Text field → Enter message → Send

Checking for New Messages

- In Standby, notification appears for new message.

- Tap a notification → Select a folder → Select an incoming message

Phonebook

Phonebook Entry Items

Phone Number

Save five numbers (32 bytes each); USIM Card Phonebook entry limit varies by card.

E-mail Address

Save five addresses (128 bytes each); USIM Card Phonebook character entry limit varies by card.

Saving to Phonebook

- Phone → Phonebook → New entry → Name field → Enter a name → Phone number field → Enter number → Select an icon → E-mail address field → Enter address → Select an icon → Save

Calling from Phonebook

- Phone → Phonebook → Search an entry → → Select number

Voice Mail

Activating

- Menu → Settings → Call settings → Optional services → Voice mail/Call forwarding → Voice mail On → Always (0 sec.) or No reply (5-30 sec.) → For No reply (5-30 sec.), select waiting time

Listening to Messages

When a caller saves a Voice Mail message, a notification and appear in Standby.

When Notification Appears

- Voice mail message → → for 1+ seconds → Dial → Follow voice prompts

When Appears

- Dial 1416 → → for 1+ seconds → Dial → Follow voice prompts

Mobile Camera

Capturing Still Images

- for 2+ seconds → Use Display as viewfinder → (halfway) → → Save

Capturing Video

- Menu → Camera → Record Video → Use Display as viewfinder → (halfway) → → / → Save

Yahoo! Keitai

Yahoo! Keitai

- Select an item

PC Site Browser

- Menu → Y! Keitai → PC site browser → Homepage → Yes/No → Select an item

Media Player

Playing Music

- Menu → Media Player → Music → Select a folder → Select a file

Creating Playlists

- Menu → Media Player → Music/Movie → Playlists → Create → Enter Playlist name → Select created Playlist → Add → Check file to save → Add to playlist

Playing Playlists

- Menu → Media Player → Music/Movie → Playlists → of Playlist to play

Managing Files

Opening Files

- Menu → Data Folder → Select a folder → Select a file

Format Memory Card

- Menu → Settings → Memory settings → Memory card → Format → Enter Phone Password → OK → Yes

Software Update

Precaution

Update may fail if battery is low; charge battery beforehand.

Updating Software

- Menu → Tools → Software update → Yes → Read Terms of Use then Agree → PIN Code entry field → Enter PIN Code → OK → OK → Update now