

# Osaifu-Keitai®

<b>Basics</b> .....	<b>16-2</b>
Downloading Lifestyle-Appli .....	16-3
Activating Lifestyle-Appli .....	16-3
<b>Using Osaifu-Keitai®</b> .....	<b>16-4</b>
Reader/Writer Transactions .....	16-4
<b>IC Card Lock Functions</b> .....	<b>16-5</b>
Activating IC Card Lock .....	16-5
Remote Lock .....	16-5

## Basics

"Osaifu-Keitai®" is a range of IC Card-based services used by Osaifu-Keitai® compatible handsets. Make purchases using e-money or e-ticketing. Hold handset up to a reader/writer to pay for your purchase.

### ■ Osaifu-Keitai® Terms

Osaifu-Keitai®	A contactless IC Card technology to read/write data by holding an IC card up to a reader/writer
IC Card	An IC chip embedded in Osaifu-Keitai®-compatible handsets
Lifestyle-Appli	Applications to use Osaifu-Keitai®. Some applications are preinstalled.

## Precautions

- Data saved in IC Card vary by service content and usage history. Procedures to delete IC Card data vary by Lifestyle-Appli. Contact Osaifu-Keitai® service providers for details.
- SoftBank is not liable for damages from accidental loss or alteration of IC Card data or settings.
- IC Card data can be misused if your Osaifu-Keitai® compatible handset is lost or stolen. SoftBank is not liable for any resulting damages.
- Downloading Lifestyle-Appli and using applications may incur high packet communication charges.
- Do not remove sticker from back of battery cover. Do not remove battery cover. Doing so may disable Osaifu-Keitai®.

## Getting Started

### Downloading Lifestyle-Appli

Download Lifestyle-Appli via Internet website.



### Registration/Settings

Activate Lifestyle-Appli to complete registration or customize settings.

- Make deposit into account, check payment records or balance, etc.

#### Note

- Keep a copy of service passwords/customer service contact, etc. in a separate place.

## Downloading Lifestyle-Appli


Main Menu ► Osaifu-Keitai ► Lifestyle-Appli ► Download

- 1 Select a Lifestyle-Appli
  - Lifestyle-Appli is saved to Data Folder.

## Activating Lifestyle-Appli

- Lifestyle-Appli cannot be activated during a call or while another S! Appli is active.

Main Menu ► Osaifu-Keitai ► Lifestyle-Appli

- 1 Select a Lifestyle-Appli
- 2 To exit,  → **Stopped**

#### Note

- Alternatively, Main Menu ► S! Appli ► Osaifu-Keitai ► Lifestyle-Appli  
or  
Main Menu ► Data Folder ► Lifestyle-Appli

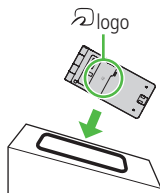
# Using Osaifu-Keitai®

## Reader/Writer Transactions


- Complete registration/settings and charge your account beforehand.
- There is no need to activate a Lifestyle-Appli during transaction.

### 1 Hold logo up to reader/writer

- When IC Card Notification Light is **ON**, Notification Light illuminates. (☞P.18-9)
- Hold handset parallel to reader/writer. Try moving handset around if recognition is slow.
- Check scan result on reader/writer display.
- Osaifu-Keitai® can be used during a call or Internet transmission. (May require extra time.)



### Note

- Data may be unreadable if a metal object, etc. is between  logo and reader/writer.
- Even though Osaifu-Keitai® is available while handset is off, Lifestyle-Appli does not activate. However, if battery is left uncharged after warning tone sounds, Osaifu-Keitai® may become disabled. Charge battery beforehand.
- When handset is held up to reader/writer, handset may show a message or vibrate depending on service. S! Appli, Messaging or Internet may also activate automatically. To avoid such cases, set the functions not to activate during transactions. (☞P.18-19)

### Tip



#### Settings

- Disable Handset Response to Commands from Reader/Writer (☞P.18-19)

# IC Card Lock Functions

## Activating IC Card Lock

<Default> OFF

- 1 Press and hold  → Enter Phone Password  
 appears in Standby.
  - Repeat the step as required to unlock.

### Note

- Alternatively, **Main Menu** ► **Osaifu-Keitai** ► **IC Card Settings**  
► **IC Card Lock** or **Main Menu** ► **Settings** ► **Security**  
► **IC Card Lock**




## Remote Lock

<Default> OFF

### Saving Numbers to Activate Remote Lock

- Save up to three phone numbers to enable Remote Lock.

**Main Menu** ► **Osaifu-Keitai** ► **IC Card Settings**  
► **Remote Lock**

- 1 Enter Phone Password → **ON** → **Numbers to Permit**
- 2 <**Not Recorded**> → Enter phone numbers
  - To save numbers from Phone Book/Incoming Call Logs or to use a payphone number: [Menu] → **Refer to** or **Payphone**
- 3 [Return] → [Set]

## Number of Calls to Activate Remote Lock

<Default> Three times

- Specify the number of incoming calls for activating IC Card Lock.

Main Menu ► Osafu-Keitai ► IC Card Settings  
► Remote Lock

- 1 Enter Phone Password → **ON**
- 2 **# of Incoming Call** → Enter a number (03-10) →  
[Set]

## Activating Remote Lock

- 1 Call 930P from one of the specified numbers (Send Caller ID)
- 2 Hang up after 930P receives the call
- 3 Repeat Steps 1-2 until specified number of incoming calls is reached (within three minutes)
  - After specified number of incoming calls, IC Card Lock is set and a message informs you IC Card Lock is activated.

### Note

- When setting IC Card Lock, call 930P from the same specified phone number. Incoming calls from different phone numbers cannot be counted.
- Specified incoming calls may not be counted when Call Forwarding is active.
- Remote Lock is not available when ring time for Answer Phone is set to 0 or Driving Mode is active.