

Data Management



About Data Folder	12-2	Advanced Features.....	12-14
Accessing Files	12-3	Accessing Files	12-14
Opening Files.....	12-3	Editing Files	12-15
Creating Animations	12-4	Managing Folders	12-15
Using Playlist (Melodies)	12-5	Managing Files	12-16
Using Playlists (Videos).....	12-5	Memory Card.....	12-16
Editing Files.....	12-7		
Editing Still Images.....	12-7		
Editing Videos	12-8		
File & Folder Management.....	12-9		
Creating a Folder.....	12-9		
Moving Files to a Different Folder	12-9		
About Memory Card.....	12-10		
Inserting & Removing a Memory Card.....	12-10		
Managing Memory Cards	12-11		
Formatting a Memory Card	12-11		
Accessing Memory Card Data.....	12-11		
Copying Data between Handset & Memory Card.....	12-12		
Configuring Print Settings of Images.....	12-13		

12



About Data Folder

Use Data Folder to manage data on handset. Files are automatically saved to folders by file format.

- Some folders contain links. Use the links to access download sites in Yahoo! Keitai.

Folders & Files in Data Folder

My Picture

Image files (Camera images and downloaded files such as My Pictograms)

Melody

Melodies and audio files recorded by Voice Announce

S! Appli

Downloaded S! Appli

Ring Songs-Music

Chaku-Uta®, Chaku-Uta Full® and downloaded music files

Videos

Video files (captured/downloaded video files)

TV

Recorded programs¹ and captured screenshots²

- 1 Save to memory card only.
- 2 Save to handset only.

When Data Folder memory is full or number of files savable is reached, a message asks whether to delete unnecessary data (note, however, this message may not appear depending on the data type). Follow the steps below to delete data:

YES → ● → Select a folder → ● → Select a data item → ● → ⊖ → YES → ●

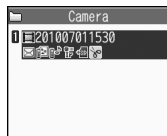
- You may need to select a data type before selecting a folder if the data you want to delete has multiple storage areas.
- You may need to select more than one data item to delete depending on the degree of insufficient memory.



Opening Files

<Example> Open Video File

- 1 **Data Folder** **Videos**
- 2 Select a folder



File List

- 3 Select a file



Opened File Window

Tip

- Select files in S! Appli to activate S! Appli. For information about S! Appli, see P. 9-7.
- Select files in Ring Songs-Music or Videos to activate Music Player. For details, see P. 9-3.

Opening Files on Memory Card

- 1 **Data Folder**
- 2 Select a folder **microSD**
- 3 Select a folder
- 4 Select a file

Indicators in File List

Indicators show file type and available operation.

- QVGA movie
- VGA movie
- Attach to mail
- Insert in Graphic Mail
- Set as wallpaper, etc.
- Set as a ringtone
- Infrared transmission
- Copy/move to memory card
- Edit
- Over 10 MB
(Applies to Memory Card files)

Using Picture Files

Open a picture file from My Picture folder.



Picture Window

Operations in Picture Window

Switch Files	
Toggle Normal Screen and Full Screen	<ul style="list-style-type: none"> • In full screen mode, view vertical images in Portrait View; horizontal images in Landscape View.
Zoom In/Zoom Out*	or
Show at Actual Size*	
Scroll Large-sized or Zoomed-in Image*	

* Press to return to the original size.



Playing/Using Melody Files

Open a file from Melody folder.



Melody Window

Playback Operations

Switch Files	
Adjust Volume	Or
Stop	
End	

Creating Animations

Create animations each of which is made of up to 20 frames using still images in My Picture folder.

- 1



Original Animation List

- 2
- 3 Select a frame Select a folder Select a still image

Repeat this step to assign a series of images to their respective frames.

 - To Cancel an Assigned Image
 - Select a frame Release This

4

Note

- Only images in JPEG format can be used for creating animations.
- Some images may be unavailable depending on the image size or file size.
- Images saved on memory card cannot be used.

Tip

- Select an animation you created in Original Animation List and press to play the animation.



Using Playlist (Melodies)

Save melodies to Playlist to play back in the saved order.

1 **Data Folder** **Melody** **Playlist**

2 **Edit Playlist**

■ **To Clear Playlist**

Release Playlist **YES**

3 **Select a number** **Select a folder** **Select a melody**

Repeat this step to assign other melodies to different numbers.

■ **To Cancel an Assigned Melody**

Select a number **Release This**

4

Tip

- Select Playlist folder in Melody and press to play Playlist.
- Changing file names of melodies on Playlist, or deleting melody files clears Playlist.

Using Playlists (Videos)

Save videos to a playlist to play them in the playlist order.

1 **Data Folder** **Videos** **Playlist**



Playlists Window

2 **Select a playlist** **Edit Playlist**

3 **Select a number** **Select a folder** **Select a video**

Repeat this step to assign other videos to different numbers.

■ **To Cancel an Assigned Video**

Select a number **Release This** **YES**

4

Tip

- Select a playlist from a playlist folder and press to play.



More Features

Advanced

Opening Files

- Check File Information
- Change Order of Files
- Set an Image to Appear in Standby
- Set a Video to Appear in Standby
- Set a Melody/Video as Ringtone

(▶ P. 12-14)

Viewing Images

- Play Animation from the Beginning
- Compose Four Images to Make One
- Set Display Size of an Image
- Edit Title of an Original Animation
- Cancel an Original Animation

(▶ P. 12-14)

Playing Melodies

- Play All Melodies in the Same Folder Repeatedly

(▶ P. 12-15)

Playing Videos

- Switch Display Format of File List
- Clear a Playlist

(▶ P. 12-15)

Customize

Display Settings

- Set Image List View

(▶ P. 14-5)



Editing Still Images

Basic Flow of Operations

- 1 → **Data Folder** → → **My Picture** → → **Select a folder** → → **Select an image** →



Picture Window

- 2 → **Edit Image** → → **Select an editing option** → → **Edit image**
- 3 to end editing
- 4 → **YES or NO** →
Select **YES** to overwrite original image.
Select **NO** to save as a new file.

Note

- Only images with in File List can be edited.
- Repeated editing may cause deterioration of image quality or increased file size.
- For images larger than VGA, some edit options are unavailable. File size is automatically reduced to VGA or smaller when saved.

Adding a Frame

- 1 [Picture Window] → → **Edit Image** → → **Frame** →
- 2 **Select a frame** →
 - To Change Frame →
 - To Rotate Frame 180 Degrees →
 - To Cancel Frame → → **Cancel** →
- 3
- 4 → **YES or NO** →

Adding Stamps

- 1 [Picture Window] → → **Edit Image** → → **Marker Stamp** →
 - To Rotate Marker Stamp → → **90° to Right, 90° to Left or 180°** →
 - To Enlarge/Reduce Marker Stamp → → **Scale Up or Scale Down** →
 - To Cancel Marker Stamp →
- 3 → **Select a position** →
 - To Paste Another Marker Stamp → → **Select a marker stamp** →
- 4
- 5 → **YES or NO** →

Pasting a Text Stamp

- 1 [Picture Window] → → **Edit Image** → → **Character Stamp** →
- 2 **Enter text** →



■ To Edit Text

→ → **Character Input** → → Enter text →

■ To Change Text Color

→ → **Character Color** → → Select a color →

Press to toggle color palettes.

■ To Change Font Type

→ → **Font Type** → → **Gothic or Ming-Cho** →

■ To Change Font Size

→ → **Font Size** → → Select a font size →

3 → **Select a position** →

4

5 → **YES or NO** →

Cropping an Image

1 [Picture Window] → → **Edit Image** → → **Trim away** →

2 Select a size → → to select an area →

3

4 → **YES or NO** →

Editing Videos

Edit and keep only the needed portion of a video clip.

1 → **Data Folder** → → **Videos** → → **Select a folder** → → **Select a video** → → **Edit Video** →

2 → **Trim Videos** → → **Any Size or 500KB** →

Specify portion to save.

▶ **To Start from Beginning of Clip**



▶ **To Start Partway Through Clip**

→ at start point →

Clip plays.

to specify end point and select .

The specified portion plays.

If **500KB** is selected, playback stops when 500KB is reached.

3 (twice) → **YES** →

Note

- Available only for QCIF (176 x 144) or smaller format clips (indicated by in File List).

More Features

Advanced

Editing Files

- Retouch an Image
- Adjust Image Brightness
- Rotate an Image
- Change Image Size
- Correct Backlight
- Refresh Skin Tone

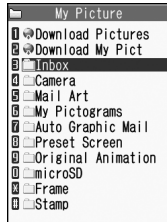
(▶ P. 12-15)



Creating a Folder

- 1 Select a folder type

<Example>When My Picture is Selected



Folder List

- 2 Enter folder name

Tip

- Folders can only be created in handset Data Folder.

Moving Files to a Different Folder

- 1 [File List]
- ▶ **To Move Selected File**
Move This Select a destination folder
 - ▶ **To Move Multiple Files**
Move Selected Select a destination folder Select a file (repeat to select another file)
 - ▶ **To Move All Files in a Folder**
Move All Select a destination folder

More Features

Advanced

Managing Folders

- Edit a Folder Name
- Delete a Folder
- Delete All Files in My Picture, Melody or Video Folder

(▶ P. 12-15)

Managing Files

- Edit a Title in My Picture File List
- Check Volume of Saved Files
- Edit a File Name
- Delete Files

(▶ P. 12-16)



About Memory Card

Save files to memory cards. Still images and videos shot with handset camera can be saved directly to memory card. Data can be copied and moved between handset and memory card. Data on memory card can also be accessed from Data Folder.

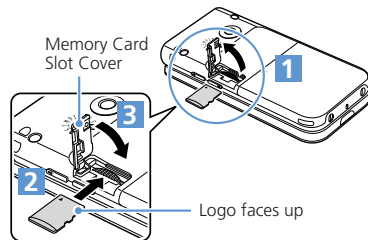
- Handset supports memory cards of up to 2 GB.
- Do not insert or remove memory cards when handset power is on.
- Insert memory cards properly. Otherwise, they cannot be used on handset.
- Do not affix stickers or labels to memory cards. As memory cards are very thin and precise mechanisms, even a thin sticker or label on a memory card may cause contact failure or destruction of data.
- Keep memory cards out of reach of infants who may accidentally swallow them or be injured.
- Do not remove a memory card or power off handset while writing and reading data with that memory card. It may cause data loss or malfunction.
- Access to memory cards may be unavailable when the battery level is low.

Inserting & Removing a Memory Card

Turn handset power off before inserting or removing a memory card.


Insertion

- 1 Open Slot Cover**
- 2 Insert memory card into Memory Card Slot until it locks**
Insert gently with the printed logo facing up.



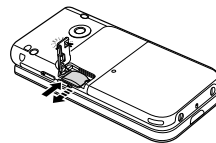
- 3 Close Slot Cover**

Tip

- If  appears in Display, there may be a contact failure. Remove and reinsert memory card.

Removal

- 1 Press and release**
Gently pull out memory card.



Note

- Memory card may spring out.
- Memory card may break if inserted or removed with force.



Formatting a Memory Card

- Format memory cards on handset only. Memory cards formatted on another device or PC may not work.
- Formatting a memory card deletes all the data on it.

1 **Tools** **microSD Manager**

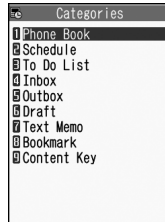
2 **microSD Format** **Enter Security Code** **YES**

Note

- Do not remove memory card while formatting. Handset/memory card malfunction may occur.
- Make sure that there is no important data left on the memory card before formatting it.

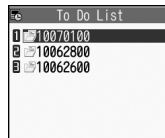
Accessing Memory Card Data

1 **Tools** **microSD Manager**



microSD Manager Window

2 **Select a category**



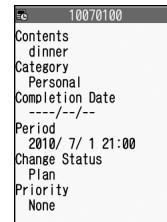
File List

3 **Select a file**



Data List

4 **Select a data item**



Data Details



Copying Data between Handset & Memory Card

Following items can be copied to/from handset and memory card:

PIM Data	Phone Book entries, Schedule, To Do List, text memos, Inbox, Outbox, Draft, bookmarks, content keys
Files in Data Folder	Still images, My Pictograms, Flash®, melodies, videos, songs

Copying Handset Data to Memory Card

Copy Phone Book entries, Schedule, messages, images, videos, etc.

<Example> Copy data in Data Folder to memory card

1 [Data List] → ☺ → **Copy to microSD** → ●

▶ **To Copy Selected Data**

Copy This → ● (⇒ Select destination folder → ●)

▶ **To Copy Multiple Data**

Copy Selected → ● (⇒ Select copy destination folder → ●) → Select a data item → ● (repeat to select another data) → ☹ → **YES** → ●

▶ **To Copy All Data**

Copy All → ● → Enter Security Code → ● (⇒ Select copy destination folder → ●) → **YES** → ●

Tip

- When one Phone Book entry or Schedule event that is set as secret is copied to memory card, its secret setting is canceled.
- Files attached to messages may be deleted.
- You need to select a destination folder when copying data in My Picture folder.
- Data saved in Pre-installed folders of Data Folder cannot be copied.
- Content keys are copied collectively at one time.

Copying Memory Card Data to Handset

To Copy Images or Other Data to Handset

1 ● → **Data Folder** → ● → **Select a folder type** → ● → **microSD** → ● → **Select a folder and sub-folder** → ● → **Select a data item** → ☺ →

Copy to Phone → ●

▶ **To Copy Selected Data**

Copy This → ●

▶ **To Copy Multiple Data**

Copy Selected → ● → Select a data item → ● (repeat to select another data) → ☹ → **YES** → ●

▶ **To Copy All Data**

Copy All → ● → Enter Security Code → ● → **YES** → ●



To Copy PIM Data to Handset

- 1 → **Tools** → → **microSD Manager** → → **Select a PIM data type** → → **Select a data item** → → **Copy/OW to Phone** →
 - ▶ **To Copy Selected Files Copy & OW this** →
 - ▶ **To Copy Multiple Files Copy & OW select** → → **Select a file** → (repeat to select another file) →
 - ▶ **To Copy All Files Copy/OW All to Ph** →
- 2 **Enter Security Code** → → **YES** → → **YES** → (→ **YES** or **NO** →)

Note

- When copying memory card data to handset in overwrite mode, the corresponding data on handset is overwritten by the copied data.
- If the maximum storable number of items is reached when copying all items, copying stops at that point.

Configuring Print Settings of Images

Specify which images on memory card to be printed and the number of prints, etc. in DPOF (Digital Print Order Format) settings so that the images can be printed by DPOF compatible printers or print service shops.

- 1 → **Data Folder** → → **My Picture** → → **microSD** → → **DCIM** →
- 2 **Select a folder** → → **Select a still image** → → **DPOF Setting** →
 - ▶ **To Specify Selected Images DPOF set One** →
 - ▶ **To Specify Multiple Images DPOF set Choice** → → **Select a still image** → (repeat to select another image) →
- 3 **Print** → → **Print Sheets** → → **Enter number of prints** →
- 4 **a Date** → → **ON** or **OFF** →
- 5

More Features

Advanced

Memory Card

- Check Available Memory Space of Memory Card
- Check & Repair Memory Card
- Delete Data on Memory Card
- Cancel Print Settings of Images

(▶ P. 12-16)



Accessing Files

Start Here

[File List]	P. 12-3
[Opened File Window]	P. 12-3
[Picture Window]	P. 12-3
[Melody Window]	P. 12-4
[Original Animation List]	P. 12-4
[Playlists Window]	P. 12-5

Opening Files

Check File Information

[File List]/[Opened File Window] (⇨
 Select a file) ⇨ ⇨ **Image Info, Melody
 Info or Properties** ⇨

Change Order of Files

[File List] ⇨ ⇨ **Sort** ⇨ ⇨ Select a
 criterion ⇨

Set an Image to Appear in Standby

[File List]/[Opened File Window] (⇨
 Select a file) ⇨ ⇨ **Set as Display** ⇨
 ⇨ **Stand-by Display** ⇨ (⇨ Select a
 layout ⇨ ⇨ Confirm preview ⇨
 Set image to other function windows
(Dialing, Mail Sending, etc.).

Set a Video to Appear in Standby

[File List] ⇨ Select a file ⇨ ⇨
Stand-by Display ⇨ ⇨ **YES** ⇨

Set a Melody/Video as Ringtone

[File List]/[Opened File Window] (⇨
 Select a file) ⇨ ⇨ **Ring Tone** ⇨ ⇨
 Select an item ⇨
 Only melodies can be set as ringtones from
 Opened File window.

Viewing Images

Play Animation from the Beginning

[Picture Window] ⇨ ⇨ **Retry** ⇨

Compose Four Images to Make One

[File List] ⇨ ⇨ ⇨ **Composite Image** ⇨
 ⇨ Select a position ⇨ ⇨ Select a folder
 ⇨ ⇨ Select an image ⇨ ⇨ Repeat
 the same step to assign three other images
 to their respective positions ⇨ ⇨
 Only images in JPEG format can be used for
 creating composite images.
 Copyright-protected images are unavailable.
 Images saved on memory card cannot be
 used.
 Some images cannot be used depending on
 their size.

Set Display Size of an Image

[Picture Window] ⇨ ⇨ **Set Image Disp.**
 ⇨ ⇨ **Normal or Fit in Display** ⇨

Edit Title of an Original Animation

[Original Animation List] ⇨ Select an
 animation ⇨ ⇨ **Edit Title** ⇨ ⇨ Edit
 title ⇨

Cancel an Original Animation

[Original Animation List] ⇨ Select an
 animation ⇨ ⇨ **Release Animation** ⇨
 ⇨ **YES** ⇨



Playing Melodies

Play All Melodies in the Same Folder Repeatedly

[Melody Window] → → *Set Repeat Play* → → *ON* →

Playing Videos

Switch Display Format of File List

[File List] → → *List Setting* → → *Title* or *Title+Image* →

Clear a Playlist

[Playlists Window] → Select a playlist → → *Release Playlist* → → *YES* →

Editing Files

Start Here

[Picture Window] P. 12-7

Retouch an Image

[Picture Window] → → *Edit Image* → → *Retouch* → → Select an effect → (three times) → *YES* or *NO* →

Adjust Image Brightness

[Picture Window] → → *Edit Image* → → *Brightness* → → to adjust brightness → (twice) → *YES* or *NO* →

Rotate an Image

[Picture Window] → → *Edit Image* → → *Rotate* → → *90° to Right, 90° to Left* or *180°* → (three times) → *YES* or *NO* →

Change Image Size

[Picture Window] → → *Edit Image* → → *Change Size* → → Select a size → (three times) → *YES* or *NO* →

Correct Backlight

[Picture Window] → → *Edit Image* → → *Correct Backlight* → (three times) → *YES* or *NO* →

Refresh Skin Tone

[Picture Window] → → *Edit Image* → → *Refresh Skin Tone* → (three times) → *YES* or *NO* →

Managing Folders

Start Here

[Folder List] P. 12-9

Edit a Folder Name

[Folder List] → Select a folder → → *Edit Folder Name* → → Edit folder name →
 Only names of user-created folders and folders in *My Pictograms* can be edited.



Delete a Folder

[Folder List] → Select a folder → → **Delete Folder** → → Enter Security Code → (→ YES →) → YES →

- To Select *Ring Songs-Music*

[Folder List] → Select a folder → → **Delete Folder** → → Enter Security Code → → **Delete This, Delete Selected** or **Delete All** → (→ Select a folder → → Repeat to select another folder →) → YES or NO → → YES →

- Only user-created folders can be deleted.
- Files in the selected folder are also deleted.
- When files that are set as wallpaper, ringtone, alarm tone, etc. are deleted, their settings are reset to default.

Delete All Files in My Picture, Melody or Video Folder

[Folder List] → → **Delete all Image** or **Delete All** → → Enter Security Code → → YES →

- When files that are set as wallpaper, ringtone, alarm tone, etc. are deleted, their settings are reset to default.

Managing Files

Start Here

[File List] P. 12-3

Edit a Title in My Picture File List

[File List] → Select an image file → → **Edit Title** → → Edit title →

Titles of files saved in Pre-installed folders cannot be edited.

Check Volume of Saved Files

[File List] → → **Memory Info** →

Edit a File Name

[File List] → Select a file → → **Edit File Name** → → Edit file name →

Names of files saved in Pre-installed folders cannot be edited.

Delete Files

[File List] → Select a file → → **Delete** →

- To Delete the Selected File
→ **Delete This** → → YES →
- To Delete Multiple Files
→ **Delete Selected** → → Select file → (repeat to select another file) → → YES →
- To Delete All
→ **Delete All** → → Enter Security Code → → YES →

Memory Card

Start Here

[microSD Manager Window] P. 12-11
 [File List] P. 12-11
 [Data List] P. 12-11
 [Data Details] P. 12-11

Check Available Memory Space of Memory Card

[microSD Manager Window], [File List], [Data List] or [Data Details] → → **microSD Info** →



Check & Repair Memory Card

[microSD Manager Window] → →

Check microSD → → **YES** →

To cancel checking and repairing a memory card, press or .

Some memory cards may not be repairable.

Delete Data on Memory Card

[File List] → Select a data item → →

Delete →

- To Delete the Selected Item

→ **Delete This** → → **YES** →

- To Delete Multiple Items

→ **Delete Selected** → → Select file →

(repeat to select another file) → →

YES →

- To Delete All

→ **Delete All** → → Enter Security Code

→ → **YES** →

Cancel Print Settings of Images

→ **Data Folder** → → **My Picture** →

→ **microSD** → → **DCIM** → →

Select a folder → → Select a still image

→ → **DPOF Setting** → → **DPOF set**

One or DPOF set Choice → (→ Select an

image → (repeat to select another

image) → → **Print OFF** or **All Print OFF**

→

