

About TV	8-2	Advanced Features.....	8-14
TV Antenna	8-3	Channel Settings.....	8-14
TV Windows	8-4	Watching TV	8-14
Initial Setup.....	8-5	Data Broadcasts	8-15
Watching TV	8-6	TV Link.....	8-15
Time Shift Playback While		Recording Programs	8-16
Watching	8-7	Playing Programs	8-16
From Quick Menu	8-7	View/Record Timer	8-17
Data Broadcasts (Japanese)	8-8		
Program Guide	8-9		
Recording/Playing Programs	8-10		
Recording Programs.....	8-10		
Playing Programs	8-10		
View/Record Timer.....	8-12		
Setting View Timer	8-12		
Setting Record Timer	8-12		



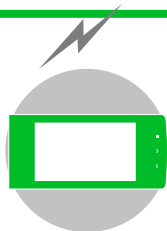
About TV

Handset supports One Seg Digital TV for cellular phones and other information terminals.

- One Seg is available only in Japan. Because other countries use different broadcast systems and frequencies, watching One Seg Digital TV is not possible outside of Japan.

One Seg

One Seg is a digital TV broadcasting service for mobile devices. It uses one segment of the terrestrial digital band for TV and data broadcasts that you enjoy at home, on your handset.



Watch TV in Widescreen

Data Broadcasts

Enjoy data broadcasts while watching TV. Access program-related information and even participate in the program (P. 8-8).

Record Programs

Record a program on memory card while viewing it and enjoy it again at a later time (P. 8-10).

View and Record Timer

Book programs you want to view/record. Program Guide can be used for booking programs (P. 8-12).

Quick Info

Sender and subject information appears for new message while TV is active (P. 14-6).

Precautions

- Never watch TV while riding a bicycle, motorcycle, or driving a car. You may not hear the sounds around you clearly, or TV image/sound may distract you creating the risk of accident. Even while walking, pay attention to the traffic around you. Be especially careful at railway crossings and pedestrian crosswalks.
- TV image/sound may be affected if a call or message is received while watching TV.
- TV information (TV links or data you entered in Data Broadcast Mode) saved on handset cannot be transferred to another handset when you change your handset to another model or when it is repaired. Keep a memo of necessary information.
- TV is available when USIM Card is inserted and with a valid SoftBank contract.
- Handset has a built-in TV Antenna. Change the orientation of handset, keep it away from/close to your body or move to a different place to improve signal reception. Keep handset open while watching TV.
- Sufficiently extend TV Antenna to improve signal reception. An inadequate picture may be improved by changing antenna direction, moving handset away from/closer to you, or changing locations.



- TV image/sound may deteriorate or signal reception may become impossible in the following areas:
 - Areas far from signal towers
 - Mountain areas or places beside tall buildings
 - In tunnels, underground malls or buildings with a lot of signal obstructions
- For more information on One Seg services, visit the following website:
 The Association for Promotion of Digital Broadcasting
 From PC: <http://www.dpa.or.jp/>
 From handset: <http://www.dpa.or.jp/1seg/k/>
 (Japanese)

When You First Activate TV

A confirmation about operations in Landscape view (widescreen mode) appears.

Read information then press ☐, select **YES**, and press ☐. If **NO** is selected, information no longer appears when activating TV.

When a Call Arrives While Using TV

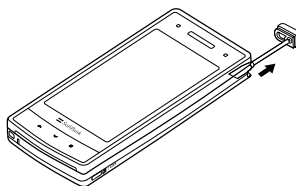
When a call arrives or when the Alarm or Schedule Alarm is activated while using TV, TV is interrupted to receive the call, etc. TV resumes after the interrupting function ends.

TV Antenna

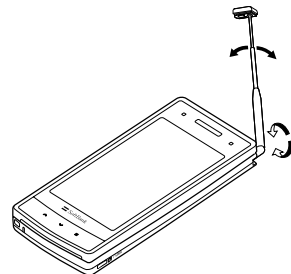
- Do not use force when changing antenna direction.

Extend

① Extend until Antenna stops

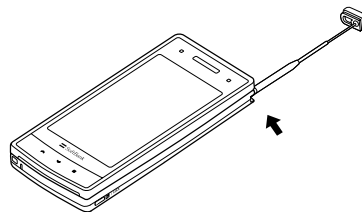


② Change direction of Antenna



Retract

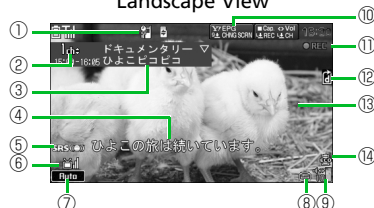
① Hold lower part of Antenna and push in all the way



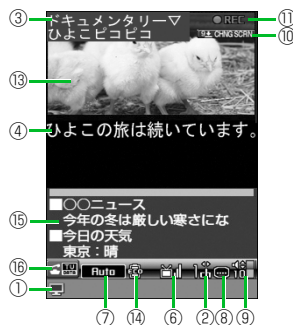


TV Windows

Landscape View



Portrait View



①	Quick Info Information about messages received while watching TV appears in tickers (P. 14-6).
②	Channel (Remote Control No.)
③	Program Title
④	Subtitles
⑤	Appears while Sound Effect is ON (no setting required)
⑥	Signal Strength Strong Moderate Weak Out of Broadcasting Area
⑦	TV Effect OFF Sound Effects OFF CS5.1ch CS5.1ch Auto Auto Live Concert Drama Sports News Variety Movie Suitable for Each Genre Manner Manner Mode
⑧	Receiving Subtitle Information Subtitles Available
⑨	Volume
⑩	Guidance Display When opened: Guide for 9 (press and hold) When closed: Program guide and Touch Sensor guide
⑪	Recording Status Recording Timer Recording Activated Recording Paused Time Shift Status (Green) Pause Normal Speed 1.3x Speed 2x Speed
⑫	Supplementary Information May appear if data broadcast is updated while in Landscape view.
⑬	Image
⑭	TV Power Saving TV Power Saving Active
⑮	Data Broadcast
⑯	TV View Mode Image Mode Data Broadcast Mode



Initial Setup

Configure channel settings for your area and save stations to a channel list.

- 1 ⇒ **TV** ⇒ ⇒ **Channel Settings** ⇒
- 2 **Select Area** ⇒ ⇒ **Select area** ⇒ ⇒ **Select prefecture/city** ⇒ ⇒ **YES** ⇒

Stations for the area are saved to a channel list.

Tip

- If signals from stations of the selected area are difficult to receive, search for stations using the **Automatic** option.

More Features

Advanced

Channel Settings

- Save Stations to a Channel List Automatically
- Save Stations of a Different Area to a Channel List
- Switch Channel Lists

(▶ P. 8-14)

Customize

Channel List

- Change Title of Channel List
- Delete a Channel List
- Assign Channels to Remote Control Numbers
- Delete a Channel

(▶ P. 14-27)

Other Settings

- Reset Channel Settings

(▶ P. 14-30)



Watching TV

- 1 → **TV** → → **Watch TV**
→



TV Window

2 Use Keypad to select a channel

Press for channel 10, for channel 11, and for channel 12.

■ To Change Next/Previous Channel



■ To Automatically Search for Receivable Stations



Press or to stop station search.

- 3 to end TV → **YES** →

- Follow the same step to end TV in Portrait view.
- Alternatively, press and hold to end TV.

Tip

- TV volume is "0" when Manner Mode is active and no earphone is connected. Adjust with .
- Play TV audio from any Bluetooth compatible audio device (P. 13-5).

Available Functions

Pause or Continue ¹	
Adjust Volume	
Mute	
Toggle Portrait and Landscape	Press and hold
Toggle Windows ²	Press and hold Windows toggle as follows: Data Broadcast → Image & Data Broadcast → Image & Subtitles & Data Broadcast

- TV viewing will resume in Time Shift playback.
- Available in Portrait view.



Time Shift Playback While Watching

Resume watching TV even after pausing with playback.

- Time Shift playback is available when you have stopped watching One Seg or you receive a call.
- Time Shift playback is unavailable when *Time Shift Setup* is set to *Auto OFF*.

1 [TV] window ⇨

TV is paused.

2 When it is possible to resume watching TV ⇨

Time Shift playback starts.

■ To Start From Beginning of Stored Playback Data



■ To Change Playback Speed



■ To End Playback



Note

- Up to two minutes of playback data can be stored. Data is overwritten starting from the oldest data. If you resume viewing after pausing for more than two minutes, viewing starts from the beginning of stored data (not from where you paused).

Tip

- Other channels are unavailable while TV viewing is paused or during Time Shift playback.

From Quick Menu

- Use Quick Menu to activate TV from closed position.

1

Touch Sensor is enabled (On).

2 Tap , or

■ Returning to Standby

⇨ or Press and hold

3 or to select ⇨



TV Window (Landscape View)

■ Returning to Standby

⇨ Press and hold ⇨ YES ⇨



Keys in TV Window (Landscape View)

Still image recording	
Starts/Ends Video recording	Press and hold
Adjust Volume	or (Lower volume or raise volume)
Forward channel selection	Press and hold or Press and hold
Returning to Standby	Press and hold

Data Broadcasts (Japanese)

Data broadcasts are available while watching TV in Portrait view. Access various kinds of program-related and other information in Data Broadcast Mode.

1 [TV] window →



Data Broadcast Mode Window

Data Broadcast Mode is activated. Access the Internet from a link to view pages relating to the current program.

■Returning to Image Mode



Available Functions

Select a Link	
Confirm Selection of a Link	
Switch Pages	
Previous Page	
Toggle Windows	Press and hold Windows toggle as follows: Data Broadcast → Image & Data Broadcast → Image & Subtitles & Data Broadcast

Note

- Viewing data broadcast information requires no fees. However, accessing Internet links will incur transmission fees.
- Data broadcasts are unavailable in Landscape view.



Program Guide

- Use Program Guide to set timer to record/activate programs.
- Activate TV from Program Guide.

1 **⇒ TV** **⇒ Program Guide**

See Program Guide help for further operations.

Before first using Program Guide, configure initial settings and agree to the terms of use. Follow the onscreen instructions.

More Features

Advanced

Watching TV

- Show Program Information
- Adjust Brightness
- Switch Main & Sub Audio
- Switch Audio Channels
- Show Current Channel List Information
- Add Current Station to Channel List
- Select a Program

(▶ P. 8-14)

Data Broadcasts

- Reload Page Accessed from Data Broadcast
- Check Certificate for SSL Page
- Exit Page and Return to Data Broadcast

(▶ P. 8-15)

TV Link

- Save TV Links
- Access Pages/Information from TV Links
- Show Details of a TV Link
- Show Number of Saved TV Links
- Delete TV Links

(▶ P. 8-15)

Customize

Image & Sound

- Set Subtitle Display
- Show/Hide Icons in Landscape View
- Save Battery by Dimming Backlight
- Keep Backlight Lighted While Watching TV
- Set Time Backlight Stays Lit While Watching TV
- Set Sound Effects
- Set Visual Image Effects
- Set TV to Pause or Continue for Incoming Calls (Time Shift Playback)

(▶ P. 14-28)

Data Broadcasts

- Set Whether to Show Images in Pages Accessed from Data Broadcasts
- Enable/Disable Sound Effects of Data Broadcasts
- Set Whether or Not to Show Confirmation Window Again

(▶ P. 14-29)



Recording Programs

TV programs can be recorded on memory card while you are watching them.

- Data broadcasts are not saved with recording.

1 [TV] window → Press and hold

Recording starts.

■ To Capture a Still Image



Captured still images are saved to TV folder in Data Folder.

2

Recording ends.

■ When Memory Becomes Full

Recording ends and the recorded portion is saved.

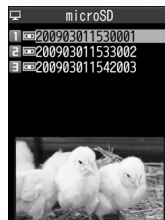
Note

- The channel remains fixed during recording.
- Recording certain programs is restricted. If a restriction is activated while recording a program, recording automatically ends, and the part that has been recorded so far is saved.
- When appears to indicate handset is out of the broadcasting area, recording is paused. When the signal strength recovers to weak or better, recording automatically resumes.
- Recordings that you make are for personal use only. Other uses require the permission of the copyright holder.

Playing Programs

1 → **Data Folder** → → **TV** →

2 **Video** → → **microSD** →



Recorded Program List Window

■ To View Captured Still Images

→ **Image** → → Select a folder →



3 Select a file →



Recorded Program Playback Window

■ To Stop Playback



Tip

- If a program was stopped partway through, resume playback from that point. Select **YES** and press

Available Keys during Program Playback

Pause/Play	
Adjust Volume	
Mute	
Fast Play	
Frame Forward	during pause
Skip by 30 Seconds	Press and hold
Toggle Sound Effects	

More Features



Advanced

Recording Programs

- Edit Title of a Recorded Program
- Reset Title of a Recorded Program
- Switch Views of Recorded Program List Window
- Check Information on a Recorded Program
- Check Volume of Recorded Programs
- Delete Recorded Programs

(▶ P. 8-16)

Playing Programs

- Specify Point to Start Playback

(▶ P. 8-16)



Customize

Recording Programs

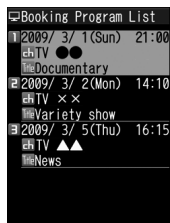
- Continue/End Recording at Low Battery

(▶ P. 14-29)



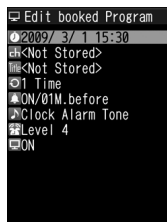
Setting View Timer

- 1 [MENU] ⇒ TV ⇒ [] ⇒ **Booking**
Program List ⇒ []



Booking Program List Window

- 2 [] ⇒ **New** ⇒ []



View Timer Setting Window

- 3 [] ⇒ [] ⇒ **Enter Date** ⇒ []
⇒ Enter date and time ⇒ []

■ To Select a Date from Calendar
⇒ Choose Date ⇒ [] ⇒ Select a date ⇒ [] ⇒ Enter time ⇒ []

- 4 [] ⇒ [] ⇒ **Select a channel**
⇒ []

- 5 [] ⇒ [] ⇒ **ON, ON/Set Time**
or **OFF** ⇒ [] (⇒ Select a time ⇒ [])

- 6 []

Setting Record Timer

- 1 [MENU] ⇒ TV ⇒ [] ⇒ **Timer**
Recording List ⇒ []



Timer Recording List Window

- 2 [] ⇒ **New** ⇒ []



Record Timer Setting Window



- 3 ⇒ ⇒ **Enter Date** ⇒
 - ⇒ Enter date and time to start recording ⇒
- 4 ⇒ ⇒ **Enter Date** ⇒
 - ⇒ Enter date and time to end recording ⇒
 - To Select a Date from Calendar
 - ⇒ **Choose Date** ⇒ ⇒ Select a date ⇒ ⇒ Enter time ⇒
- 5 ⇒ ⇒ **Select a channel** ⇒
- 6 ⇒ ⇒ **ON or OFF** ⇒
- 7 (⇒ **YES or YES (Confirm Once)** ⇒)

When the Set Time Comes

View Timer:

The alarm sounds for about five minutes, and the start date and time, channel, program title and animation appear in Display. Press any key to stop the alarm tone.

Record Timer:

One minute before the recording start time, the alarm sounds for about two seconds. After the start date and time, end date and time, channel, program title and animation appear in Display, TV activates. Then, recording starts at the set start time.

Note

- Set a timer start date and time that is more than one minute from the present time.

More Features

Advanced

View/Record Timer

- Select a Timer Alarm Tone
- Enter Title of Booked Program
- Set Regular Activation of View or Record Timer
- Set Timer Alarm Volume
- Activate TV Directly from Timer Alarm Notification Window
- Set Priority at Recording Start Time When a TV & Music Group Function is Active
- Edit View/Record Timer Settings
- Change Order of Booked Programs
- Delete Booked Programs
- Check Volume of Recorded Programs
- Check Result of Timer Recording

► P. 8-17)



Channel Settings

Save Stations to a Channel List Automatically

MENU ⇒ **TV** ⇒ **Channel Settings** ⇒ **Automatic** ⇒ **YES** ⇒ **YES** ⇒ Enter title ⇒ **OK**

Save Stations of a Different Area to a Channel List

MENU ⇒ **TV** ⇒ **Channel List** ⇒ **Not Stored** ⇒ **Channel Settings** ⇒ **Select Area** ⇒ **OK** ⇒ Select area ⇒ **OK** ⇒ Select prefecture/city ⇒ **YES** ⇒ **OK**

Switch Channel Lists

MENU ⇒ **TV** ⇒ **Channel List** ⇒ **OK** ⇒ Select a channel list ⇒ **OK**

Watching TV

Start Here

[TV] window P. 8-6

Show Program Information

[TV] window ⇒ **Program Info** ⇒ **OK**

Adjust Brightness

[TV] window ⇒ **Display Setting** ⇒ **Brightness** ⇒ **OK** ⇒ Select a level ⇒ **OK**

Switch Main & Sub Audio

[TV] window ⇒ **Sound** ⇒ **Main/Sub Sound** ⇒ **OK** ⇒ Select an audio output option ⇒ **OK**

Switch Audio Channels

[TV] window ⇒ **Sound** ⇒ **Sound Switch** ⇒ **OK** ⇒ Select an audio channel ⇒ **OK**

Sound Switch is available when there is more than one audio channel.

Show Current Channel List Information

[TV] window ⇒ **Channel** ⇒ **Channel Info** ⇒ **OK**

Add Current Station to Channel List

[TV] window ⇒ **Channel** ⇒ **Add Channel** ⇒ **YES** ⇒ **OK**

Use **Add Channel** when you find a new station by holding down **OK**.



Advanced Features

Select a Program

[TV] window ⇒ ⇒ **Channel** ⇒ ⇒ **Tune Service** ⇒ ⇒ Select a service (program) ⇒

Tune Service is available when more than one service (program) is broadcast from the same station.

Data Broadcasts

Start Here

[Data Broadcast Mode] windowP. 8-8

Reload Page Accessed from Data Broadcast

[Data Broadcast Mode] window ⇒ ⇒ **Data Broadcast** ⇒ ⇒ **Re-read** ⇒

Check Certificate for SSL Page

[Data Broadcast Mode] window ⇒ ⇒ **Data Broadcast** ⇒ ⇒ **Show Certificate** ⇒

Exit Page and Return to Data Broadcast

[Data Broadcast Mode] window ⇒ ⇒ **Data Broadcast** ⇒ ⇒ **Back to Data BC** ⇒

TV Link

Start Here

[Data Broadcast Mode] window... P. 8-8

Save TV Links

[Data Broadcast Mode] window ⇒ Select an item ⇒ ⇒ **YES** ⇒
 Some TV links may have expiration dates.

Access Pages/Information from TV Links

⇒ **TV** ⇒ ⇒ **TV Link** ⇒

Types of TV links are indicated by the following icons:

- Memo information
- Data broadcast site
- Internet content

Show Details of a TV Link

⇒ **TV** ⇒ ⇒ **TV Link** ⇒ ⇒ Select a TV link ⇒ ⇒ **Display Detail** ⇒

Show Number of Saved TV Links

⇒ **TV** ⇒ ⇒ **TV Link** ⇒ ⇒ ⇒ **No. of TV Link** ⇒



Delete TV Links

[MENU] → TV → [■] → TV Link → [■] → Select a TV link → [P]

- To Select *Delete This*
→ Delete This → [■] → YES → [■]
- To Select *Delete Selected*
→ Delete Selected → [■] → Select a TV link → [■] → Repeat step of selecting TV link → [■] → [■]
- To Select *Delete All*
→ Delete All → [■] → Enter Security Code → [■] → YES → [■]

Reset Title of a Recorded Program

[Recorded Program List] window
→ Select a program → [P] → Initialize Title → [■] → YES → [■]

Switch Views of Recorded Program List Window

[Recorded Program List] window
→ [P] → Switch List → [■] → Title or Title + Image → [■]

Check Information on a Recorded Program

[Recorded Program List] window
→ Select a program → [P] → Show Info → [■]

Check Volume of Recorded Programs

[Recorded Program List] window
→ [P] → Check Memory → [■]

Delete Recorded Programs

[Recorded Program List] window
→ Select a program → [P]

- To Select *Delete This*
→ Delete This → [■] → YES → [■]
- To Select *Delete Selected*
→ Delete Selected → [■] → Select a file → [■] → [P] → Delete → [■] → YES → [■]
- To Select *Delete All*
→ Delete All → [■] → Enter Security Code → [■] → YES → [■]

Playing Programs

Start Here

[Recorded Program Playback] window P. 8-11

Specify Point to Start Playback

[Recorded Program Playback] window → [■] → [P] → Location → [■] → [■] to specify point → [■]

Recording Programs

Start Here

[Recorded Program List] window.. P. 8-10

Edit Title of a Recorded Program

[Recorded Program List] window
→ Select a program → [P] → Edit Title → [■] → Edit title → [■]



View/Record Timer

Start Here

[Booking Program List] window P. 8-12
 [View Timer Setting] window . P. 8-12
 [Timer Recording List] window .. P. 8-12
 [Record Timer Setting] window . P. 8-12

Select a Timer Alarm Tone

[View Timer Setting] window →
 → → Select a folder →
 (→ Select a sub folder →) →
 Select an alarm tone →

Enter Title of Booked Program

[View Timer Setting] window or
 [Record Timer Setting] window →
 → → Enter program title →

Set Regular Activation of View or Record Timer

[View Timer Setting] window or
 [Record Timer Setting] window →
 → → **1 Time, Daily or Select Day** →

When **Select Day** is specified, select days of the week and press .

Set Timer Alarm Volume

[View Timer Setting] window or
 [Record Timer Setting] window →
 → → to adjust volume →

Activate TV Directly from Timer Alarm Notification Window

[View Timer Setting] window →
 → → **ON or OFF** →

When **ON** is set, press twice and select **YES** from Alarm Notification window to activate TV and watch the booked program.

Set Priority at Recording Start Time When a TV & Music Group Function is Active

[Record Timer Setting] window →
 → → **Recording or Operation Preferred** →

When **Recording** is set, the function in operation is interrupted/ended, and recording starts. When **Operation Preferred** is set, a confirmation asking whether to start recording appears.

Edit View/Record Timer Settings

[Booking Program List] window or
 [Timer Recording List] window →
 Select a booked program → →
 Edit each item →

Change Order of Booked Programs

[Booking Program List] window or
 [Timer Recording List] window →
 → **Sort** → → Select a criterion →



Delete Booked Programs

[Booking Program List] window or
[Timer Recording List] window →
Select a program → → **Delete** →



- To Select *Delete This*
→ *Delete This* → → YES →
 - To Select *Delete selected*
→ *Delete selected* → → Select
programs → → → YES →
 - To Select *Delete All*
→ *Delete All* → → Enter
Security Code → → YES →
- Select *Delete past* to delete old bookings.

Check Volume of Recorded Programs

[Timer Recording List] window →
 → **Memory Info** →

Check Result of Timer Recording

→ TV → → **Result Timer Rec**
→ → Select an entry →

Press to play the recorded program.